



**Portable Gas Monitor**  
**GW-3**  
**Data Logger Management Program**  
**SW-GW-3**  
**Operating Manual**

**RIKEN KEIKI Co., Ltd.**

2-7-6 Azusawa, Itabashi-ku, Tokyo, 174-8744, Japan

Website: <http://www.rikenkeiki.co.jp/>

## 1. Introduction

The operating procedures and precautions described in this operating manual apply only for use in accordance with the stipulated purposes. Riken Keiki rejects all liability in cases involving use of the program in ways not described in this manual.

This operating manual omits descriptions of basic operations like command selection and dialog box settings for Microsoft Windows 7, Windows 8, and Windows 10. If you are using Windows for the first time, read the Windows manual and familiarize yourself with basic Windows operations before proceeding.

The descriptions in this Operating Manual use screen examples from Windows 10.

### WARNING

The CD on which this program is provided is a CD-ROM.  
Do not attempt to play this CD on a regular audio CD player.  
High audio volumes may damage your ears or speakers.

### CAUTION

Requires pointing device.

This software requires the use of a pointing device such as a mouse or touchpad.  
It cannot be used with a keyboard alone.

### 1-1. Software purpose and features

This software program is designed to import data collected using the data logger function of the GW-3 into a PC for various purposes.

Importing data collected using the data logger function into a PC offers the following benefits:

- Allows collected data to be listed.
- Allows collected data details to be displayed in graph or table form.
- Allows graph and table data to be printed and stored as hard copies.
- Retains records of past data.
- Eliminates the need to write down data on paper by hand.
- Simplifies the management of multiple devices.

### NOTE

- Unauthorized reprinting or reproduction of the contents of this document in part or in whole is strictly prohibited, unless otherwise stipulated by law.
- The contents of this document are subject to change without notice to allow product improvements.
- The user must accept the separately provided Software License Agreement before using this product. Opening the product package constitutes consent to the terms of the license agreement.
- Use this software solely for the intended purpose. Modifying the product or using the product in a manner departing from this manual may affect product safety and quality. Riken Keiki rejects all liability for any incidents or damages arising from failure to observe the warnings indicated above.

(c) Copyright 2019 Riken Keiki Co., Ltd. All rights reserved.  
Riken Keiki Co., Ltd. owns the copyright to this software.

Microsoft Windows 7, Microsoft Windows 8, and Microsoft Windows 10 are registered trademarks of Microsoft Corporation in the US and other countries.

# Contents

1. Introduction.....	2
1-1. Software purpose and features.....	2
Contents .....	3
2. Installing and Uninstalling.....	4
2-1. Operating environment precautions.....	4
Precautions regarding handling of the CD-ROM.....	4
2-2. Installing the software.....	4
2-3. Installation procedure.....	5
Saving past data before reinstalling.....	8
Points to note during installation.....	8
2-4. Uninstallation procedure.....	9
3. Operating procedures.....	11
3-1. Download screen.....	11
① Receiving data from the GW-3.....	12
② Receiving device information data.....	13
③ Downloading data.....	14
④ Downloading all main unit data.....	15
⑤ Clearing GW-3 main unit data.....	16
⑥ Turning off the power for the GW-3 main unit.....	16
⑦ Switching to automatic processing.....	17
3-2. Instrument Information screen.....	18
① Data source type.....	19
② Status information.....	19
③ Calibration history information.....	20
④ Alarm point setting values.....	20
3-3. Data screen.....	21
① Deleting data.....	22
② Viewing data details.....	22
③ Summary display area.....	23
3-4. Data View screen.....	26
① Selecting table or graph.....	27
② Sending to printer.....	28
Printer setup precautions.....	30
③ Saving to file.....	31
④ Viewing data summary at the same time.....	32
⑤ Table details.....	33
⑥ Graph details.....	34
3-5. Last Calibration screen.....	35
① Selecting display details.....	36
② Sending to printer.....	37
③ Deleting data.....	38
④ Changing the password.....	39
3-6. Set screen.....	40
① Setting font and graph colors.....	41
② Changing main unit status.....	43
③ Updating changes in GW-3 main unit.....	43
4. Data Maintenance.....	44
4-1. Data storage configuration details.....	44
4-2. Backing up.....	44
5. Usage Precautions.....	45
6. Troubleshooting.....	46
7. IrDA Specifications.....	47
7-1. Infrared communication.....	47
8. File Organization.....	48
8-1. Current directory immediately after installation.....	48
8-2. Current directory during operation.....	48
9. Software Function Specifications.....	49

## 2. Installing and Uninstalling

### 2-1. Operating environment precautions

This program is compatible with Microsoft Windows 7, Microsoft Windows 8, and Microsoft Windows 10. The program is not compatible with other operating systems.

This program requires up to approximately 40 MB of free hard disk space to install. It may require additional space, depending on the number of data samples. Make sure sufficient disk space is available.

### CAUTION

Precautions regarding handling of the CD-ROM
<ol style="list-style-type: none"><li>1. CD-ROM storage Do not store in locations subject to direct sunlight or high temperatures and humidity.</li><li>2. CD-ROM drive type Do not insert in slot-loading CD-ROM drives. The label on the CD-ROM may prevent the CD-ROM from ejecting properly. Load the CD-ROM into a tray-loading CD-ROM drive.</li></ol>

### 2-2. Installing the software

Insert the install CD containing this program into the CD-ROM drive of your PC. The installation screen will appear automatically after a short while.

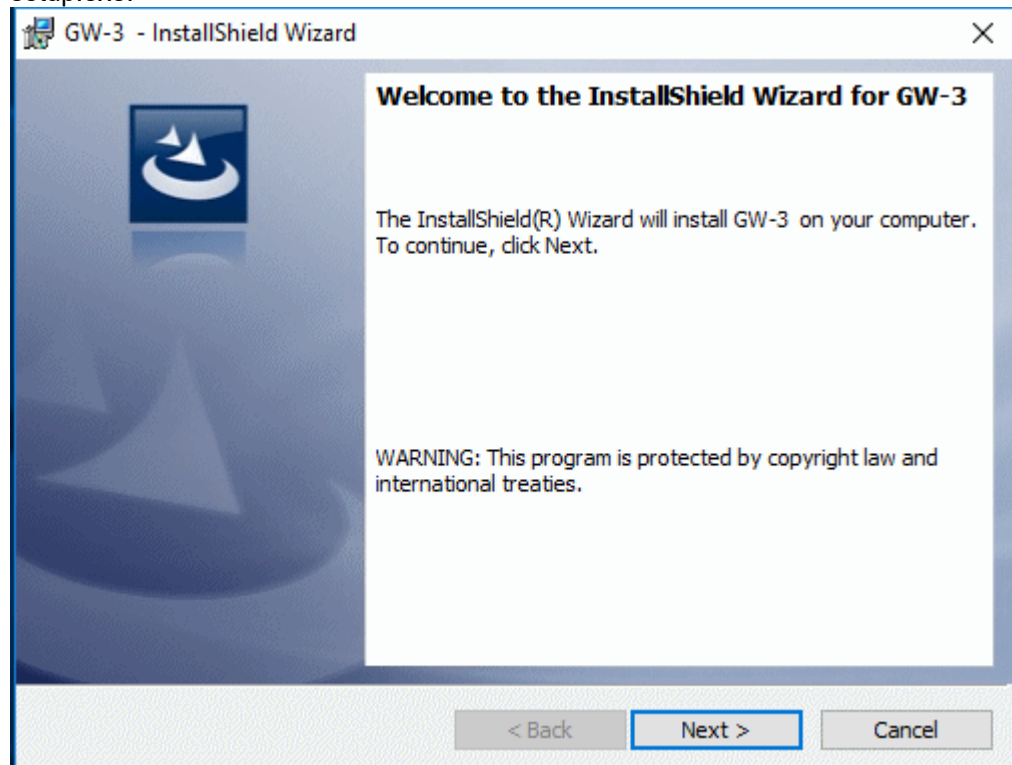
Do the following if the PC does not support automatic CD-ROM startup:

1. Open the CD-ROM drive in Explorer.
2. Double-click on the file "setup.exe".

## 2-3. Installation procedure

- Launch setup

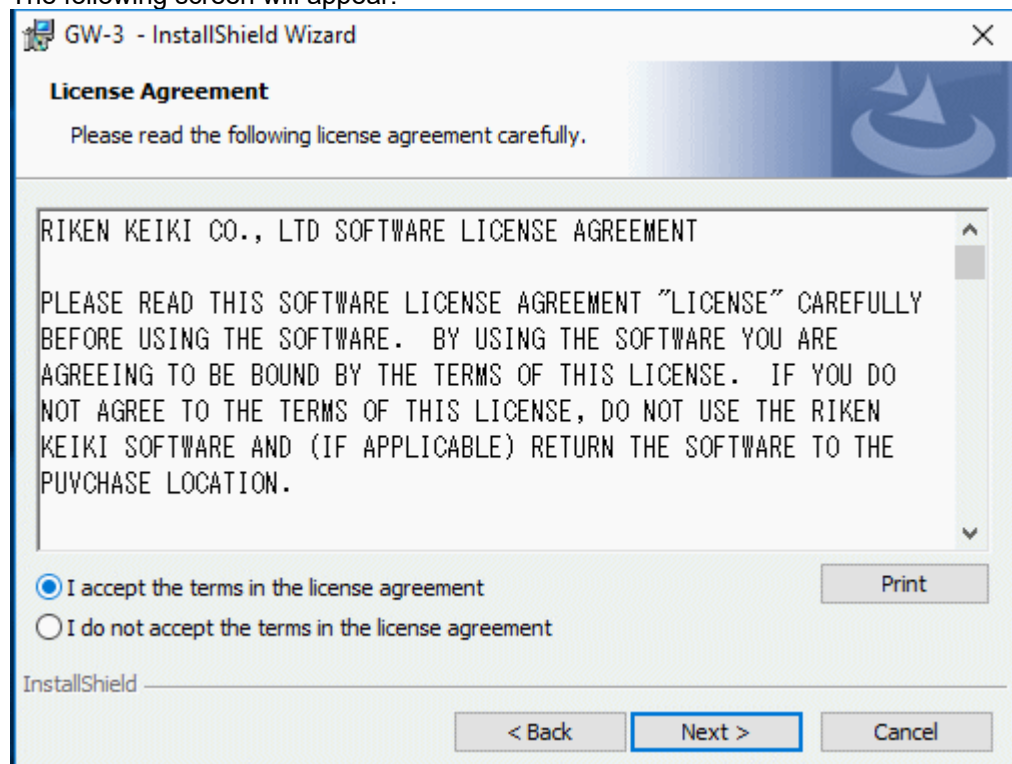
The following screen will appear after you insert the CD-ROM and double-click on setup.exe.



Click the "Next" button.

- Accept license agreement

The following screen will appear:

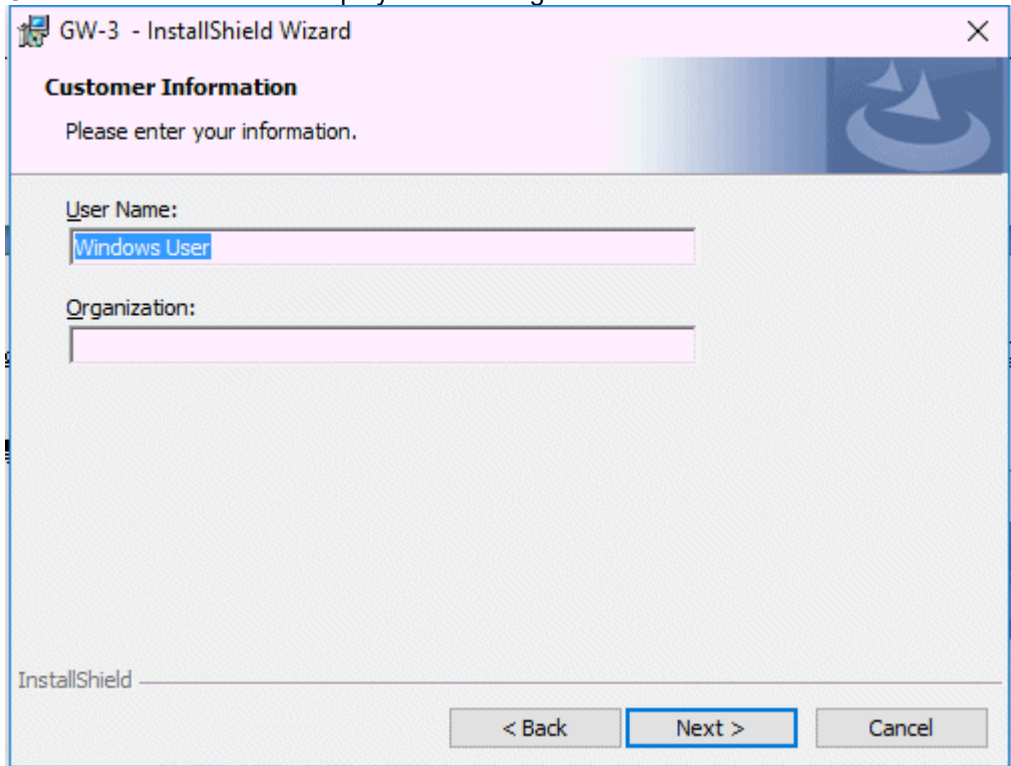


To install the software, click the "Next" button. To abort the process, click the "Cancel" button.

**CAUTION:** Make sure you have read and fully understand the terms of the software license agreement before installing the software.

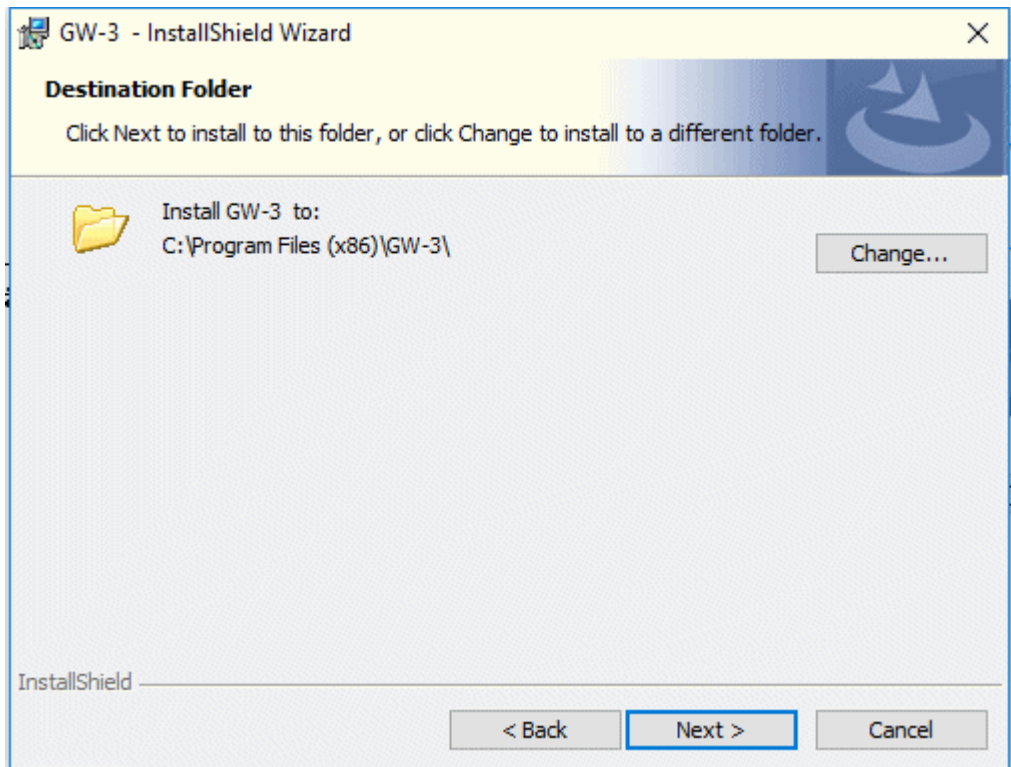
- User information

Click the "Next" button to display the following screen:



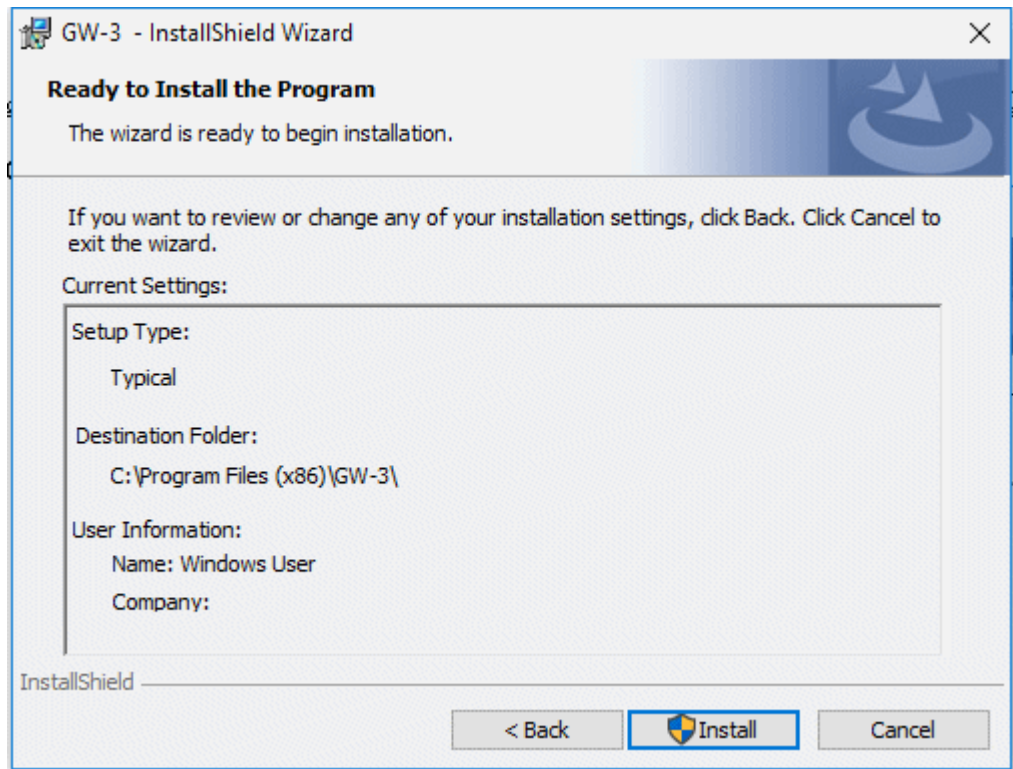
Enter the user information and click "Next".

- Destination folder



To install in this folder, click "Next". To install in another folder, click "Change".

- Start setup

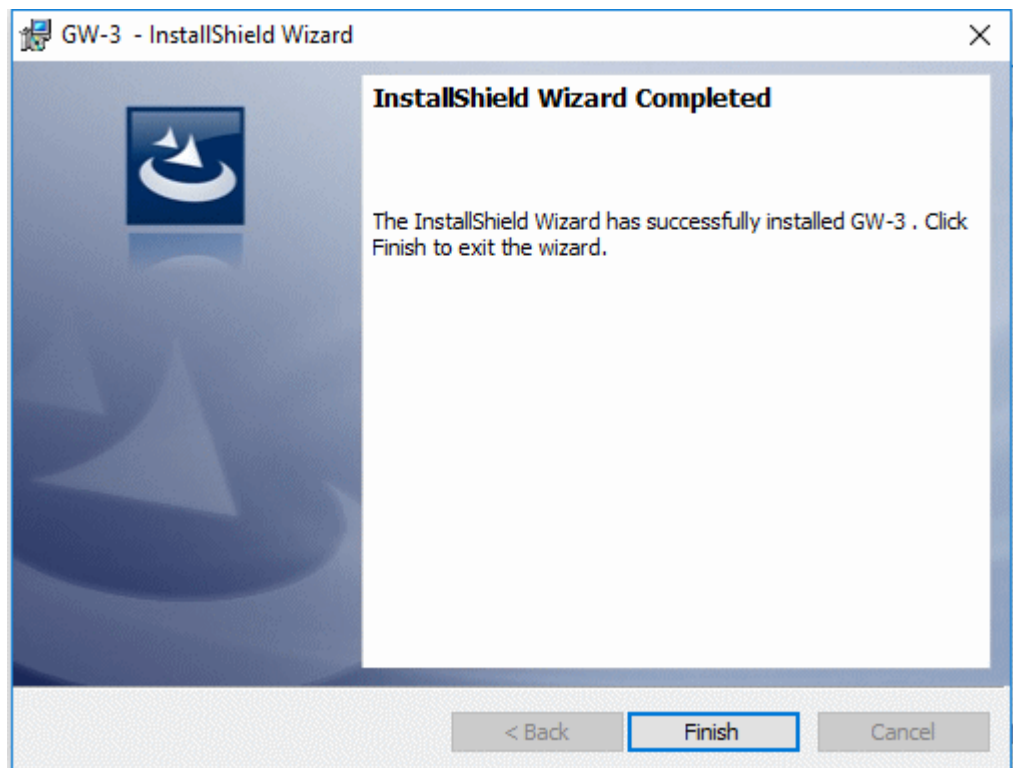


Click the "Install" button to begin installing.

\* A "User Account Control" dialog is displayed. Click "Yes".

- Complete

The following screen will appear once setup is complete:



Click "Finish" to complete the setup.

The program can be used as soon as setup is complete.

**CAUTION****Saving past data before reinstalling**

Note the following precautions if reinstalling the program:

1. Uninstall the program before reinstalling.
2. If the program is uninstalled after it has been used, certain files will remain undeleted. One such file is the "GW3.mdb" database file. If you wish to save past data, save this file to another location before deleting the folder.

**CAUTION****Points to note during installation**

This software requires libraries for various drivers for the Windows system. Installing the software automatically initiates the processing required to incorporate these libraries.

You will be asked to install system libraries with administrator privileges.

Log in as an administrator if this happens and then install the system libraries.

You will then be asked to restart Windows. When Windows restarts, log in once again as a general user, then install the application.

(The libraries and the application can be installed by launching setup.exe on the CD-ROM. Administrator privileges are required only if the necessary libraries are not present in the system folder.)

**Using with a network connection**

Confirm the following when installing on a PC connected to a network:

IrDA communication uses certain TCP/IP-based technology (communication technology used in the Internet, etc.) and uses a special communication group and IP address.

For this reason, communications may be blocked in certain cases by strong Internet security software.

Where possible, run the software on a PC not connected to a network.

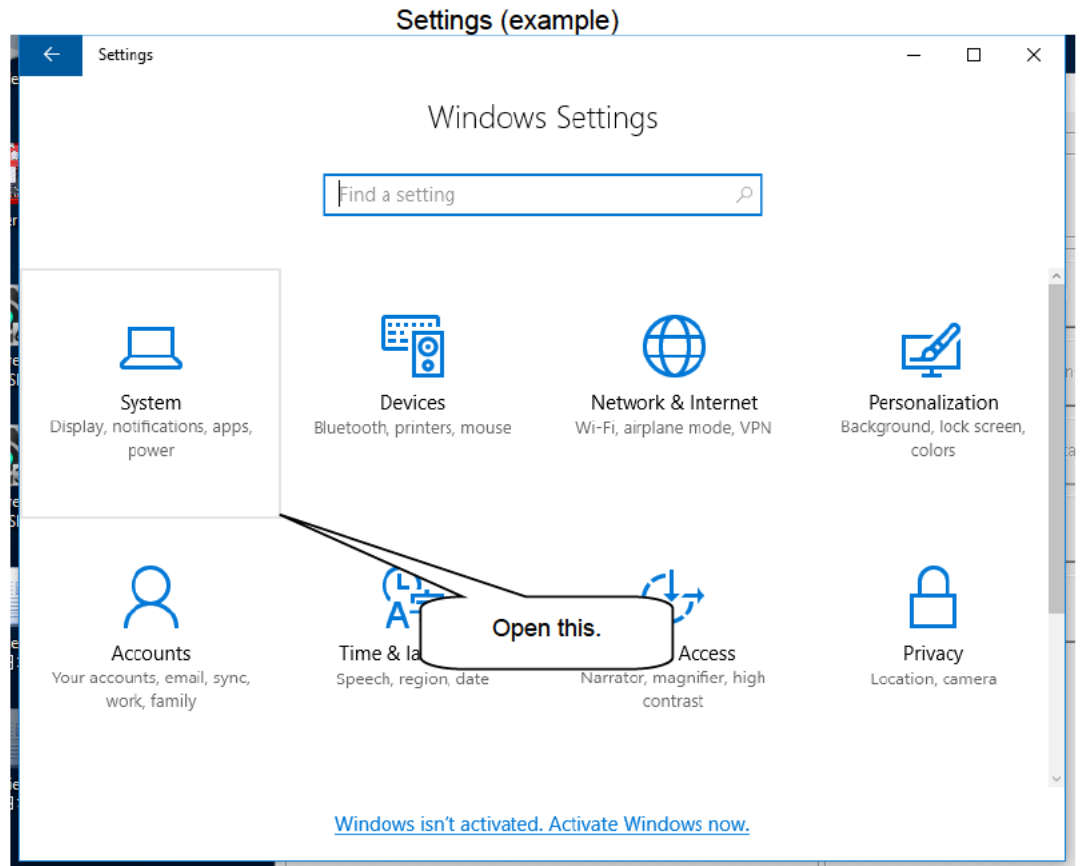
If use on a PC connected to a network is unavoidable, carefully assess the security settings before use.



## 2-4. Uninstallation procedure

- Startup

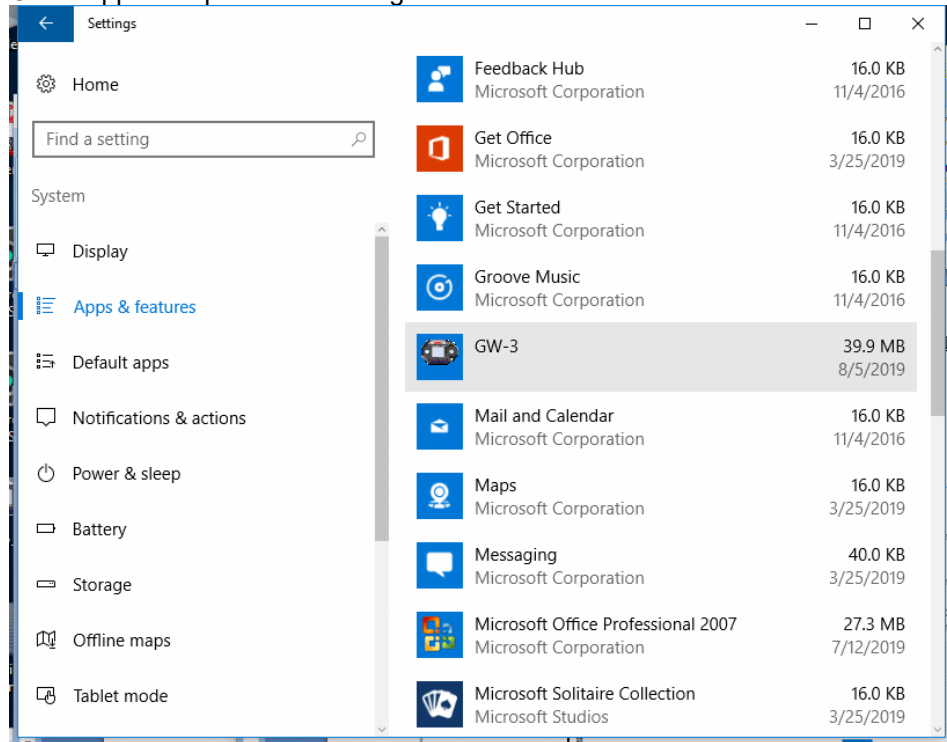
To uninstall the software, click “Start” on the taskbar, click “Settings”, and launch Settings.



Click “Apps” in Settings to start.

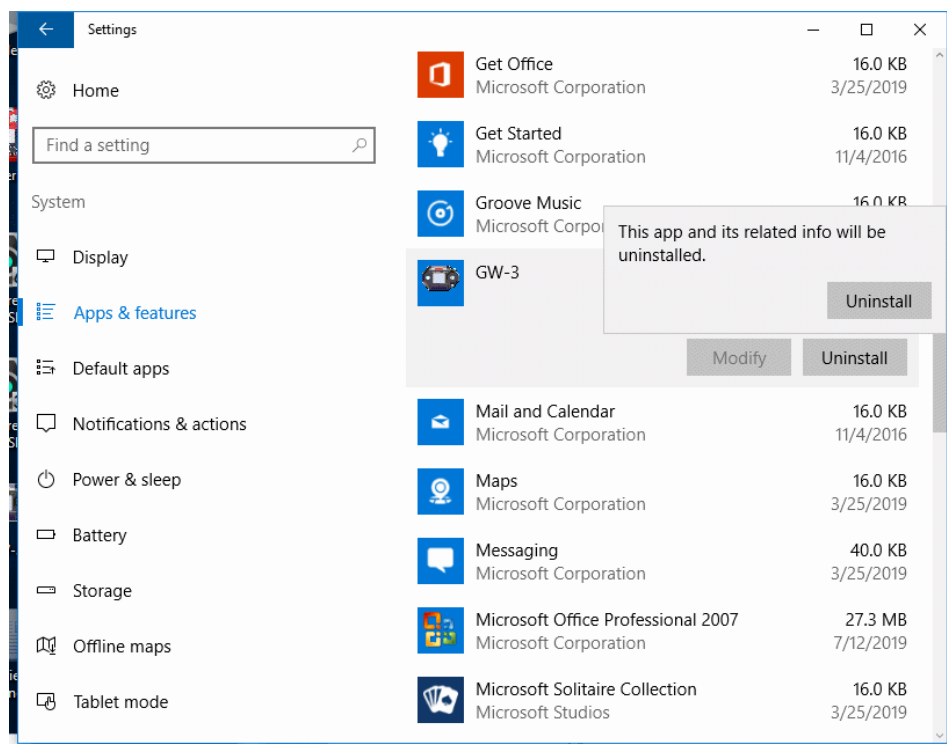
- Select GW-3

Click "Apps" to open the following window:



- Start deletion

Click "GW-3".



Click "Uninstall" to display the following dialog:

Click "Uninstall" in the confirmation dialog.

\* A "User Account Control" dialog is displayed. Click "Yes".

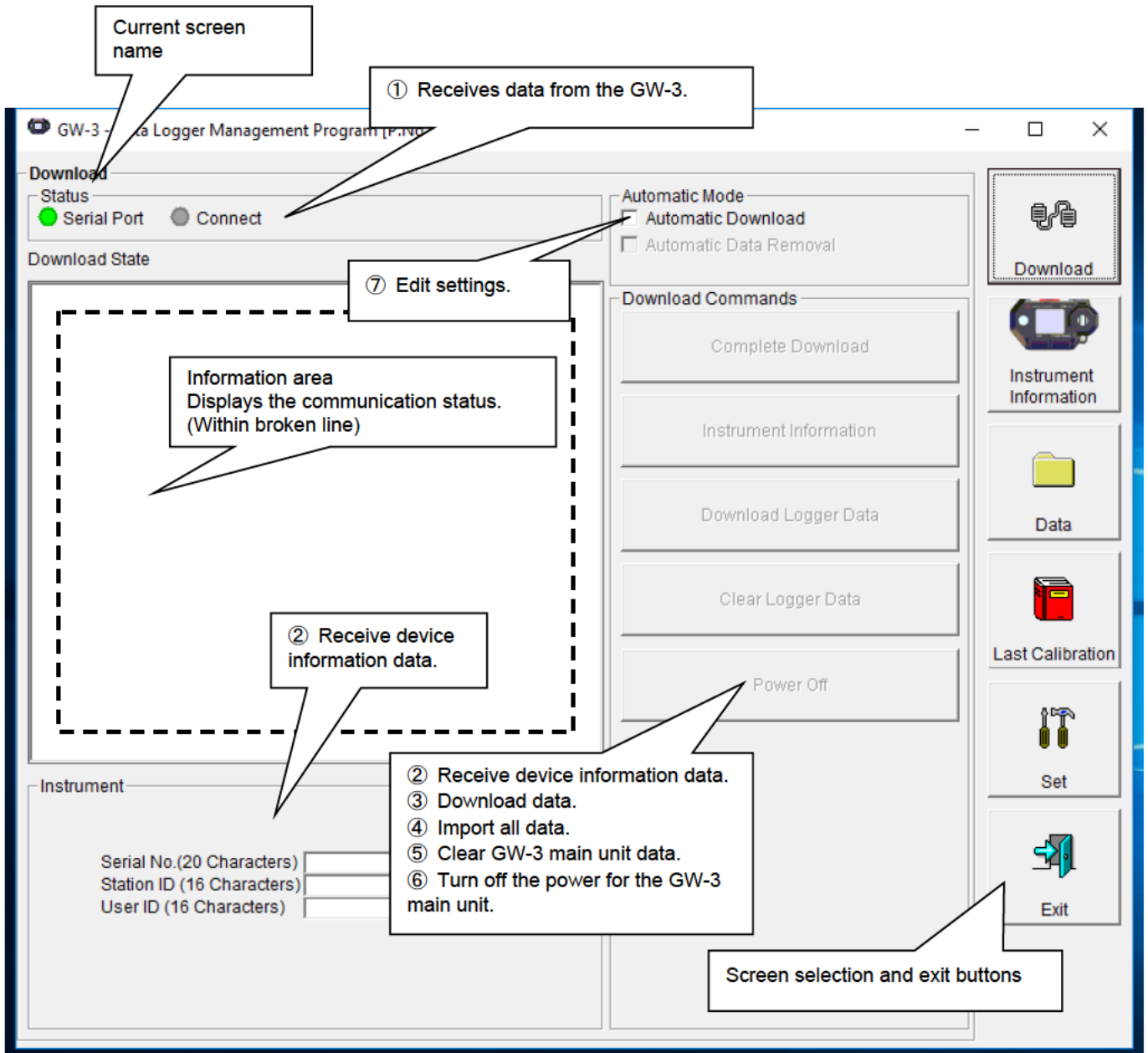
CAUTION: The dialog "Do you want to remove the shared file?" may appear when uninstalling. Select "No"; selecting "Yes" may affect other applications.

### 3. Operating procedures

Start the program by clicking the “GW-3” shortcut on the desktop or click the Start menu and start the "Program".

#### 3-1. Download screen

The Download screen follows the splash screen.



To start data communication, place the GW-3 in a suitable location, start this program, and power on the main unit. The program will automatically determine whether data communication is possible; if so, it will enter reception standby mode.

① Receiving data from the GW-3

● Main unit preparation

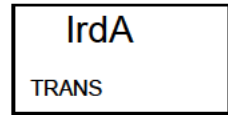
1. Start this software.
2. Place the GW-3 in a location where communication is possible with the power turned off.
3. Turn on the power for the GW-3.

CAUTION:

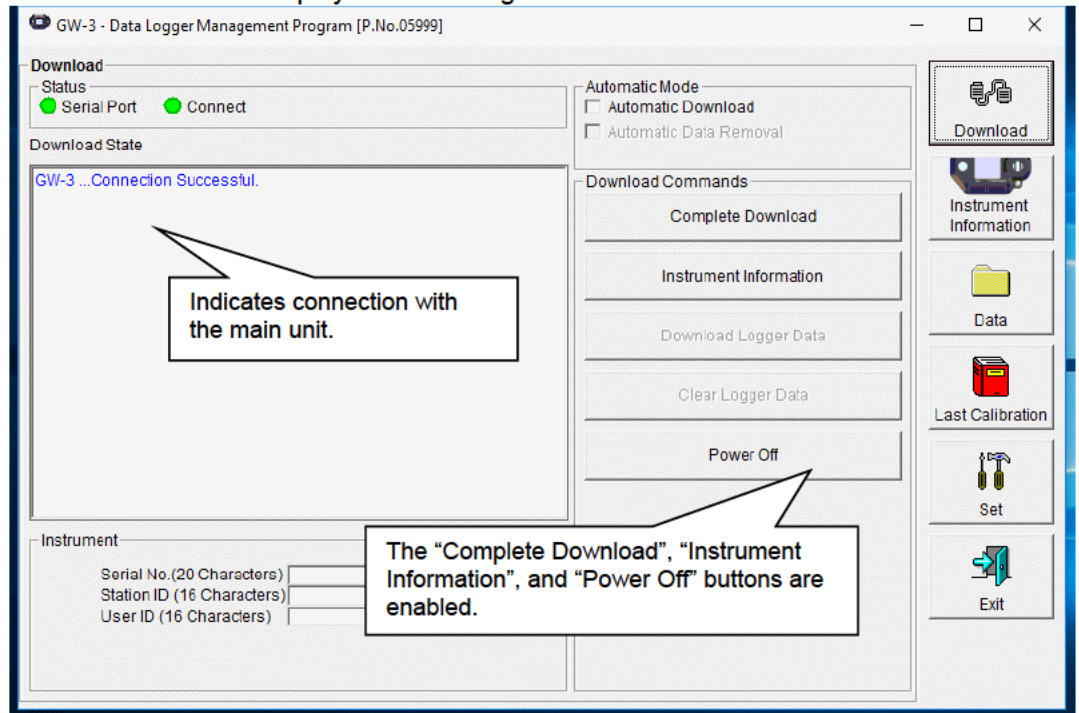
Be sure to place the GW-3 in a location where communication is possible before turning on the power.

Connection cannot be made if moved to a location where communication is possible with the power already on.

The LCD on the GW-3 will appear as shown on the right. →  
(This may be somewhat difficult to read due to the display limitations of the GW-3 LCD.)



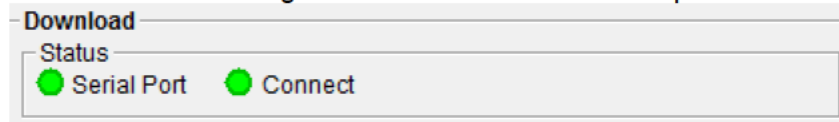
The information area displays the following information:



CAUTION:

If the details shown in the information area differ from those shown here, power off the GW-3 main unit and check and change the location of the main unit as necessary before turning on the power once again.

The "Status" area changes to indicate communication is possible.



Serial Port:

Communication possible: Green    The PC port is available for use.  
Communication not possible: Red

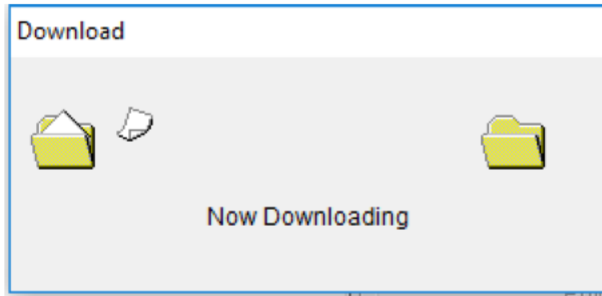
Connect:

Standby: Gray  
Communicating: Green

② Receiving device information data

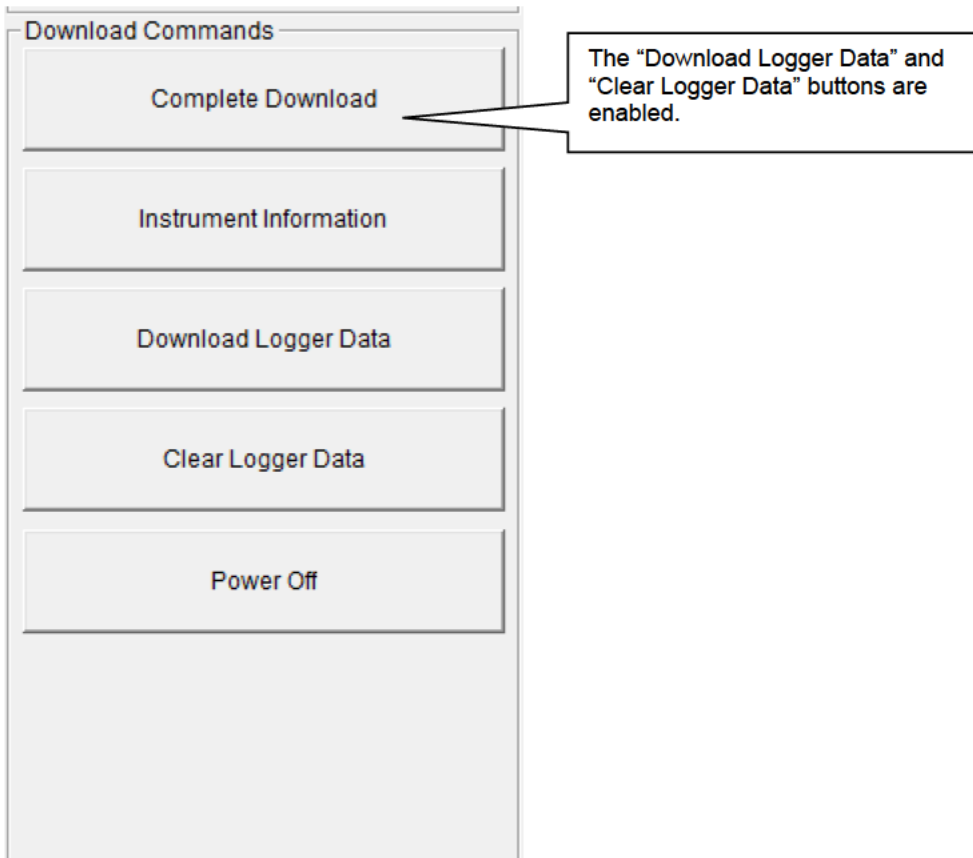
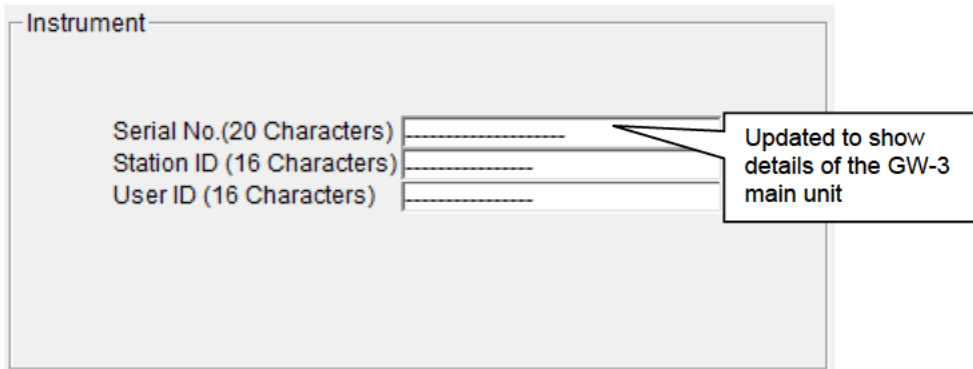
- Receive device information

First, click the "Instrument Information" button in the window on the previous page to receive device information data.



An animated display will appear while data is being received.

Once the "Instrument Information" data has been received, the details shown in the "Instrument" area will be updated and the "Download Logger Data" and "Clear Logger Data" buttons will be enabled.

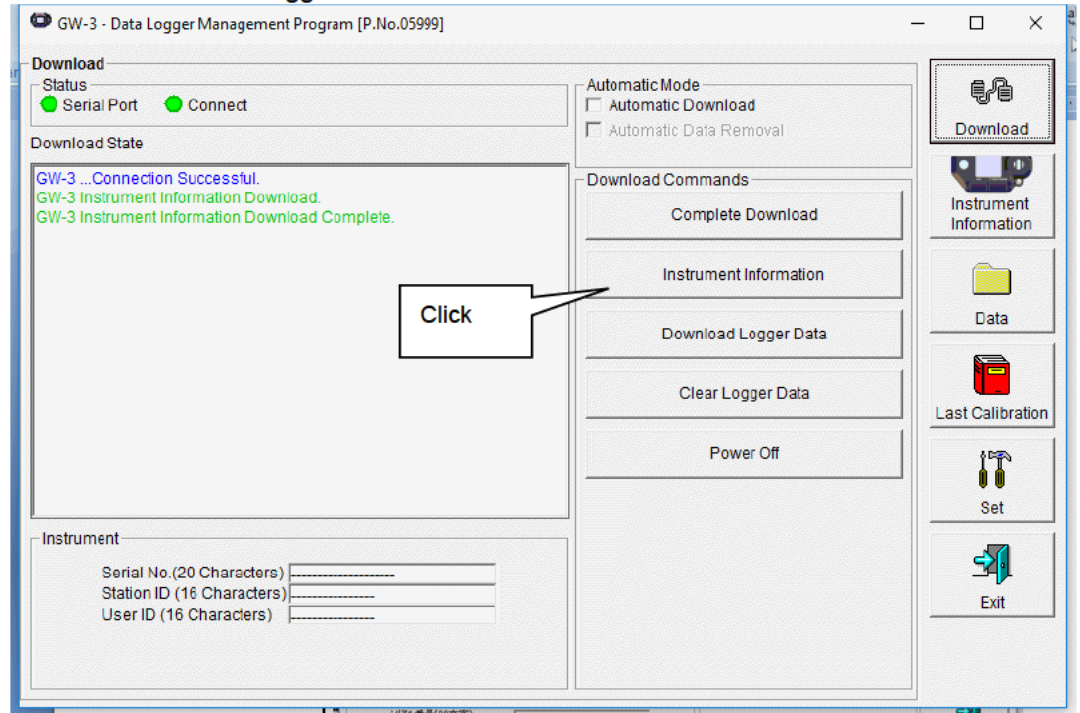


### ③ Downloading data

- Trend data
- Event data

After clicking the “Instrument Information” button and downloading the device information data, the “Download Logger Data” button is enabled. You can download trend data and event data with the “Download Logger Data” button.

Click the “Download Logger Data” button.



The information area displays the data receiving status.

**CAUTION:**

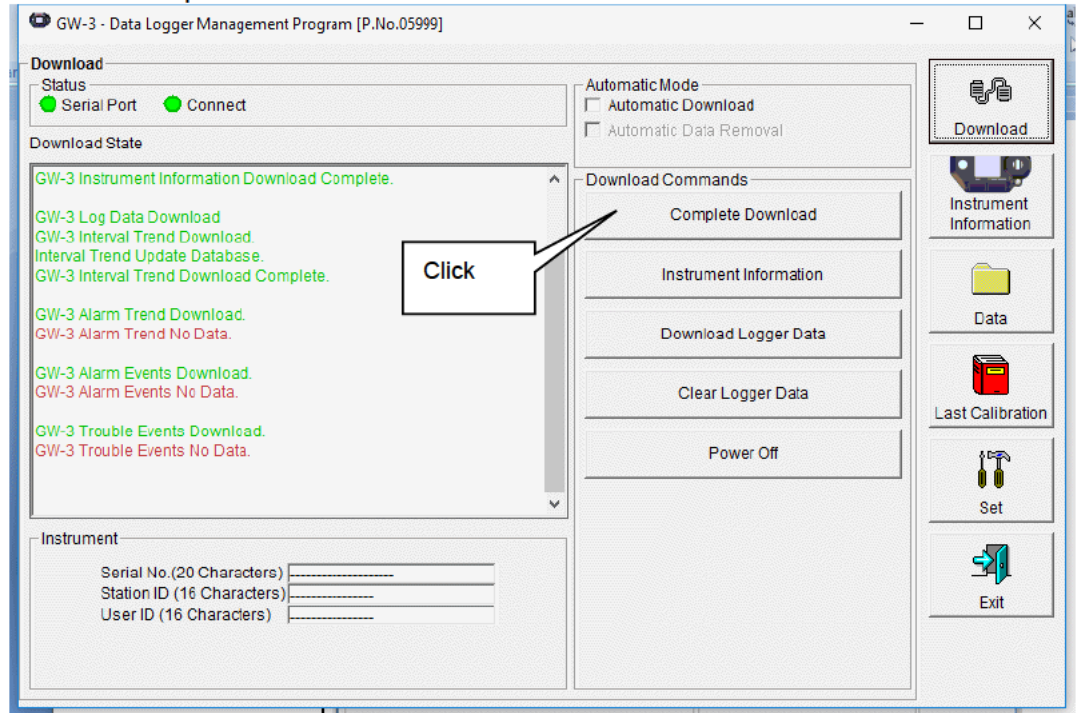
Since access to other data is not permitted, other download buttons and the “Set” button are disabled while data is being downloaded.

④ Downloading all main unit data

- All data

Clicking the “Complete Download” button downloads all data, including “Instrument Information”, “Interval Trend”, “Alarm Trend”, “Alarm Events”, “Trouble Events”, and “Power ON/OFF Events” data.

Click the “Complete Download” button.



The information area displays the data receiving status.

**CAUTION:**

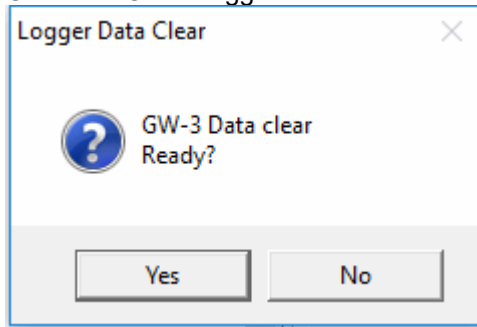
Since access to other data is not permitted, other download buttons and the “Set” button are disabled while data is being downloaded.

## ⑤ Clearing GW-3 main unit data

- Clear data

Clicking the “Clear Logger Data” button clears all data from the GW-3.

Click the “Clear Logger Data” button.



Click “Yes” to begin clearing the data.

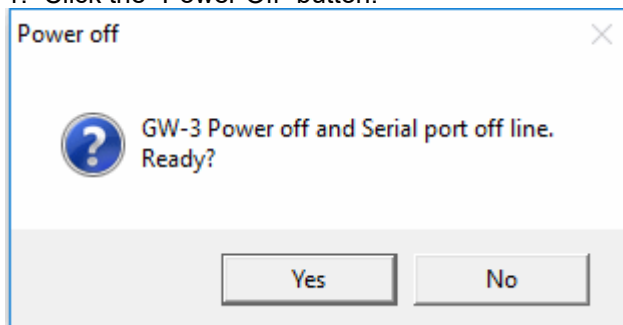
Once cleared, data cannot be restored. Store required data before clearing.

## ⑥ Turning off the power for the GW-3 main unit

- Power off

Clicking the “Power Off” button turns off the power for the GW-3 main unit and resets the PC serial port.

1. Click the “Power Off” button.



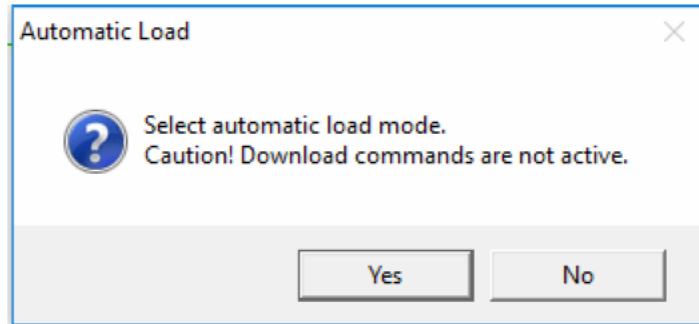
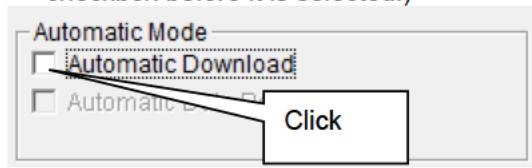
Click “Yes” to begin the process of powering off the GW-3 main unit and to reset the PC serial port before switching to standby to await data from the main unit.



⑦ Switching to automatic processing

● Automatic download mode

1. Click to select the “Automatic Download” checkbox. (The screen here shows the checkbox before it is selected.)



Click “Yes” to switch to automatic processing and to download data from the main unit automatically when communication is performed next.  
Click “No” to cancel the mode change.

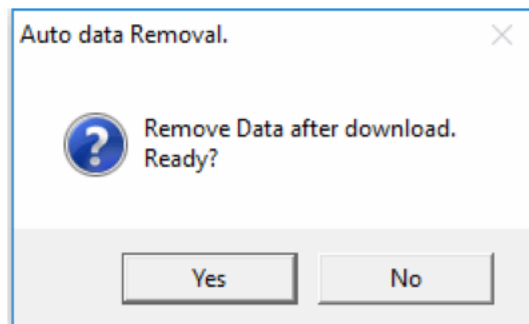
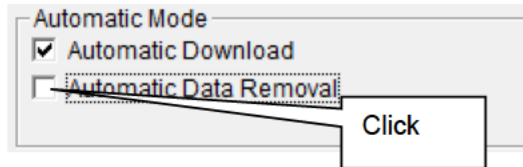
● Automatic removal after download

When automatic downloading is selected, the PC will automatically download all data when the GW-3 main unit is powered on. The GW-3 main unit will then power off.

Data cannot be downloaded manually while automatic processing is underway.

Automatic processing can be configured to automatically delete downloaded data after it is downloaded.

1. Click to select the “Automatic Data Removal” checkbox.



Click “Yes” to automatically delete all data inside the GW-3 after it is downloaded.

\*This is a convenient way to reduce download times when repeating the Download → Delete → Download procedure several times.

### 3-2. Instrument Information screen

Click the “Instrument Information” button on the right-hand side of the screen to display the following screen. This screen lists device information data about the connected GW-3 main unit.

① Data source information

② Status information

③ Calibration history information

Click this button.

④ Alarm point setting values

**Instrument Information [Connected]**  
GW-3 Status

Serial No. (20 Characters)  
-----

Station ID (16 Characters)  
SID 001

User ID (16 Characters)  
UID 001

Calibration History						
Gas	Calib.Date	Before	After	A.Cal.	Cal.Due(Days)	
CO(2000ppm)	1/1/2018	0	0	50	Now	
---(--)	---	---	---	---	---	

Last Bump Test				
Gas	Bump Test Date	Test Result	Concentration	mp Test Due(Da
CO(2000ppm)	1/1/2018	0	0	Now
---(--)	---	---	---	---

Warning and Alarm point					
Gas	Warning	Alarm	AlarmH	STEL	TWA
CO(2000ppm)	25	50	50	200	25
---(--)	---	---	---	---	---

Download

Instrument Information

Data

Last Calibration

Set

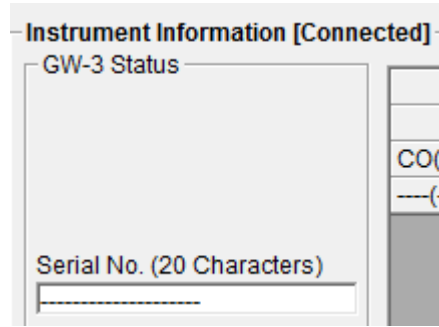
Exit

**CAUTION:** This screen is read-only. Data cannot be edited on this screen. → See 3-6. Set screen.  
Data is not displayed if the “Instrument Information” data has not been downloaded.

① Data source information

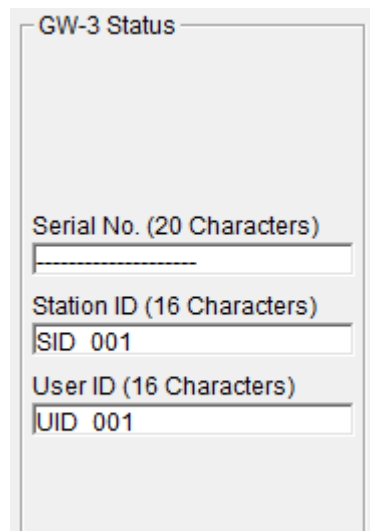
- Data source information

The indication will be [Connected] if information about the connected gas monitor main unit is displayed.



② Status information

- Information details



Displays the "Serial No.", "Station ID", and "User ID" stored inside the main unit. CAUTION: These boxes are read-only and cannot be edited.

③ Calibration history information

● Calibration history details

Calibration History					
Gas	Calib.Date	Before	After	A.Cal.	Cal.Due(Days)
CO(2000ppm)	1/1/2018	0	0	50	Now
---(--)	----	----	----	----	----

Details:

- Gas: Measured gas names (full-scale units)
- Calib.Date: Date of last calibration
- Before: Concentration before last calibration
- After: Concentration/calibration failure after last calibration
- A.Cal: Automatic calibration concentration
- Cal.Due (Days): Warranty period for uncalibrated state (A warning is displayed in red when calibration expires.)

● Bump test history details

Last Bump Test				
Gas	Bump Test Date	Test Result	Concentration	mp Test Due(Da
CO(2000ppm)	1/1/2018	0	0	Now
---(--)	----	----	----	----

Details:

- Gas: Measured gas names (full-scale units)
- Bump Test Date: Date of last bump test
- Test Result: Concentration result for last bump test
- Concentration: Calibration gas concentration for last bump test
- Bump Test Due (Days): Warranty period for state with no bump test (A warning is displayed in red when the bump test expires.)

④ Alarm point setting values

● Details

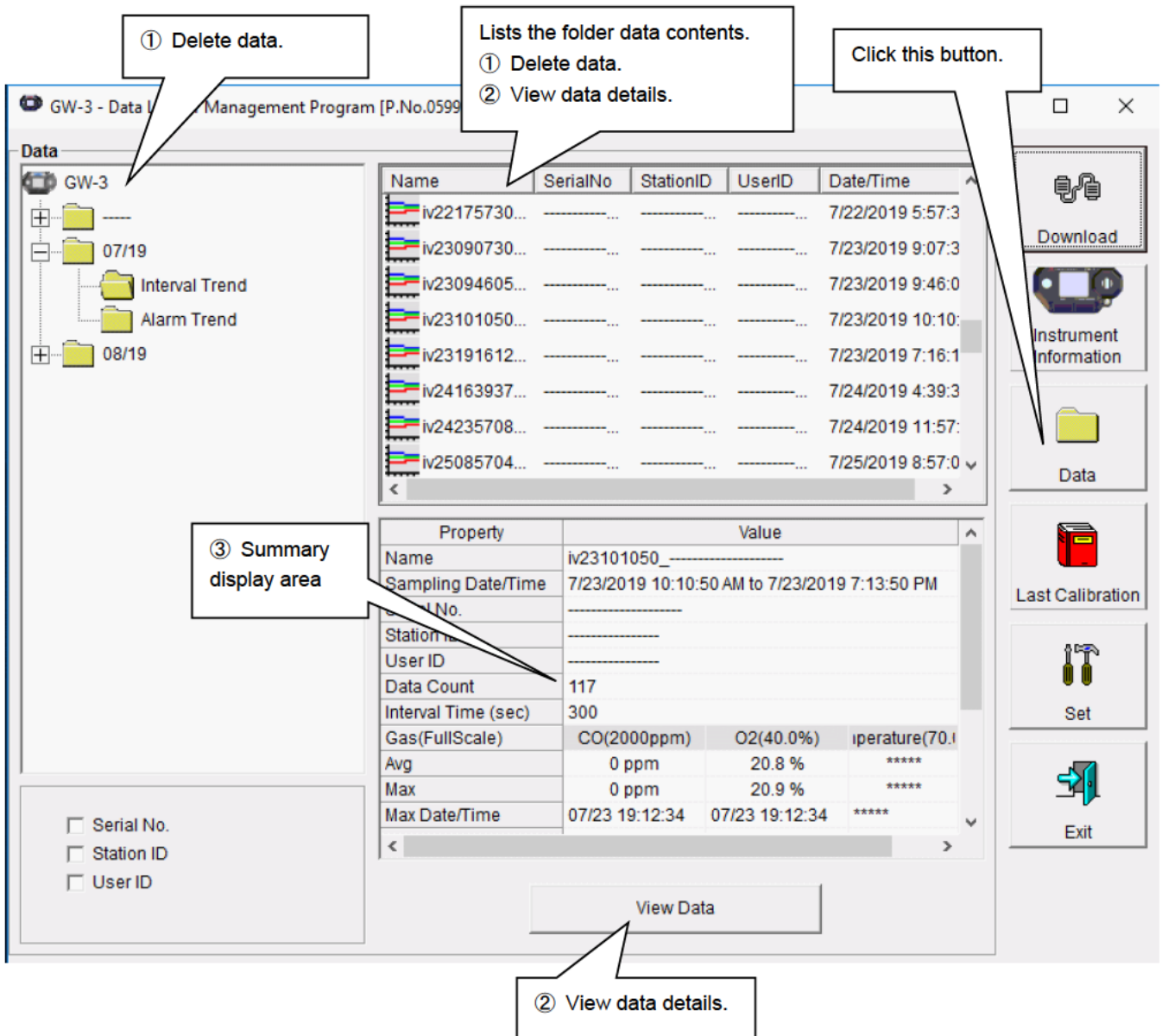
Warning and Alarm point					
Gas	Warning	Alarm	AlarmH	STEL	TWA
CO(2000ppm)	25	50	50	200	25
---(--)	----	----	----	----	----

Details:

- Gas: Measured gas names
- Warning: 1st alarm point concentration
- Alarm: 2nd alarm point concentration
- AlarmH: 3rd alarm point concentration
- STEL: STEL alarm point concentration
- TWA: TWA alarm point concentration

### 3-3. Data screen

Click the “Data” button on the right-hand side of the screen to display the following screen. This screen lists the downloaded data.



This screen can be used in the same way as Windows Explorer. However, the following operations are not available:

1. Renaming data
2. Moving data to other locations

The Explorer-style folders are displayed hierarchically in order of serial number, station ID, and user ID.

The folder and data names have the following formats:

Folder name: 03/11 = Data for March 2011

File name: 22111930\_3EB = Interval trend for 11:19:30 on 22nd (date and time of logging start)

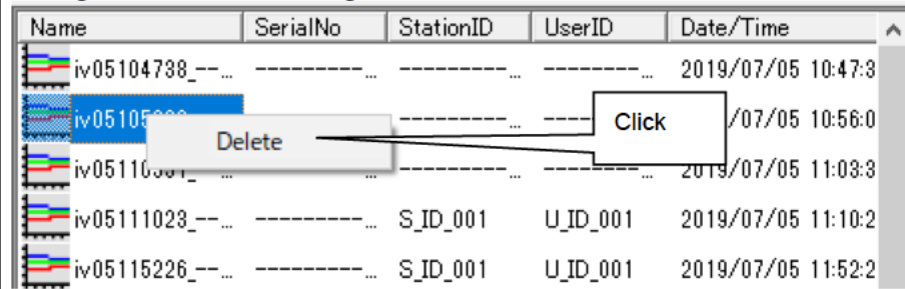
al26150419\_3EB = Alarm trend for 15:04:19 on 26th (date and time of alarm occurrence)

The number of data samples allowed in each folder is limited by the PC's hard disk capacity. To maintain acceptable response times, you should back up data files. See "4. Data Maintenance" for more information.

① Deleting data

● Delete

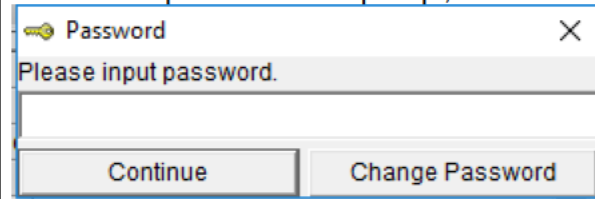
1. Click and select the data (folder) to delete.
2. Right-click without moving the mouse.



● Password input

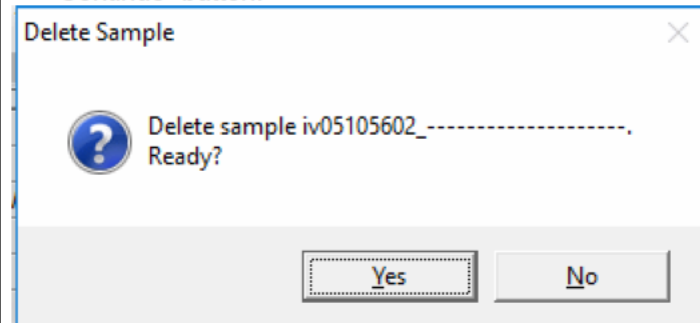
Click "Delete" on the "Delete" menu that appears.

1. Enter the password at the prompt, then click the "Continue" button.



CAUTION: Clicking "Continue" without entering a password will cancel the delete.

2. The following message will appear when you enter the correct password and click the "Continue" button.



Click the "Yes" button to delete the data.  
Click the "No" button to cancel data deletion.

CAUTION: The default password immediately after installation is "Riken" (not case-sensitive). See "3-5. ④ Changing the password" for information on how to change the password.

② Viewing data details

● To data details

1. Click the data the details of which you wish to view. Confirm that the summary appears in the summary display area, then click the "View Data" button.

Or:

2. Double-click the data the details of which you wish to view.

See "3-4. Data View screen" for information on how to operate the Data View screen.

③ Summary display area

- Details

A summary of the data is displayed if the data selected is normal data.

Interval trend

Property	Value		
Name	iv23101050_-----		
Sampling Date/Time	7/23/2019 10:10:50 AM to 7/23/2019 7:13:50 PM		
Serial No.	-----		
Station ID	-----		
User ID	-----		
Data Count	117		
Interval Time (sec)	300		
Gas(FullScale)	CO(2000ppm)	O2(40.0%)	Temperature
Avg	0 ppm	20.8 %	*****
Max	0 ppm	20.9 %	*****
Max Date/Time	07/23 19:12:34	07/23 19:12:34	*****
Min	*****	20.9 %	*****
Min Date/Time	*****	07/23 19:12:34	*****
Warning	25 ppm	18.0 %	*****
Alarm	50 ppm	18.0 %	*****

- Name: Data name
- Sampling Date/Time: Date and time of measurement start and end
- Serial No./Station ID/User ID: GW-3 main unit status
- Data Count: Number of data samples
- Interval Time (sec): Sampling interval (seconds)
- Gas name (FullScale): Gas (full-scale)
- Avg: Gas average value
- Max: Gas data maximum value
- Max Date/Time: Date and time of maximum value detection
- Min: Gas data minimum value
- Min Date/Time: Date and time of minimum value detection
- Warning: 1st alarm point
- Alarm: 2nd alarm point
- AlarmH: 3rd alarm point
- STEL: STEL alarm point
- TWA: TWA alarm point

Alarm events

DateTime	Gas	Event
27/12/2019 12:51:59	CO(2000ppm)	WARNING
27/12/2019 12:51:59	CO(2000ppm)	ALARM
27/12/2019 12:51:59	CO(2000ppm)	ALARM H
27/12/2019 12:51:55	CO(2000ppm)	WARNING
27/12/2019 12:51:55	CO(2000ppm)	ALARM
27/12/2019 12:51:55	CO(2000ppm)	ALARM H
27/12/2019 12:51:52	CO(2000ppm)	WARNING
27/12/2019 12:51:52	CO(2000ppm)	ALARM
...	900 Datas	

- DateTime: Date and time of event occurrence
- Gas: Gas generated
- Event: Event type

**Alarm trend**

Property	Value		
Name	al23103311_-----		
Alarm Date/Time	7/23/2019 10:33:11 AM		
Serial No.	-----		
Station ID	-----		
User ID	-----		
Data Count	360		
Interval Time (sec)	5		
Gas(FullScale)	CO(2000ppm)	O2(40.0%)	Temperature
Value	0 ppm	16.9 %	26.1 .C
Warning	25 ppm	18.0 %	*****
Alarm	50 ppm	18.0 %	*****
AlarmH	50 ppm	25.0 %	*****
STEL	200 ppm	*****	*****
TWA	25 ppm	*****	*****

Name: Data name  
 Alarm Date/Time: Date and time of alarm occurrence  
 Serial No./Station ID/User ID: GW-3 main unit status  
 Data Count: Number of data samples  
 Interval Time (sec): Sampling interval  
 Gas name (FullScale): Gas (full-scale)  
 Value: Concentration at time of alarm occurrence  
 Warning: 1st alarm point  
 Alarm: 2nd alarm point  
 AlarmH: 3rd alarm point  
 STEL: STEL alarm point  
 TWA: TWA alarm point

**Calibration history**

DateTime	Gas	Before	After
7/23/2019 7:18:57 PM	CO(2000ppm)	0 ppm	----
7/23/2019 7:18:57 PM	O2(40.0%)	20.9 %	----
7/23/2019 7:18:25 PM	CO(2000ppm)	0 ppm	----
7/23/2019 7:18:25 PM	O2(40.0%)	20.7 %	----
7/23/2019 7:16:37 PM	CO(2000ppm)	0 ppm	----
7/23/2019 7:16:37 PM	O2(40.0%)	20.9 %	----
7/23/2019 7:15:00 PM	CO(2000ppm)	0 ppm	----
7/23/2019 7:15:00 PM	O2(40.0%)	20.9 %	----

DateTime: Date and time of event occurrence  
 Gas: Gas  
 Before: Concentration before calibration  
 After: Concentration after calibration

**Trouble events**

DateTime	Gas/Body	Event
7/26/2019 2:58:51 PM	CO(2000ppm)	Fail(iSen.)
7/26/2019 2:58:50 PM	O2(40.0%)	Fail(iSen.)
7/26/2019 2:57:53 PM	O2(40.0%)	Fail(Sens.)
7/23/2019 7:18:57 PM	O2(40.0%)	Fail(Span)
7/23/2019 7:18:57 PM	CO(2000ppm)	Fail(Span)
7/23/2019 7:18:25 PM	O2(40.0%)	Fail(Span)
7/23/2019 7:18:25 PM	CO(2000ppm)	Fail(Span)
7/23/2019 7:16:37 PM	O2(40.0%)	Fail(Span)
...	11 Datas	

DateTime: Date and time of event occurrence  
 Gas/Body: Gas generated or GW-3 main unit  
 Event: Event type



Bump tests

DateTime	Gas	Test Result	Concentration	Judge
2019/08/09 15	H2S(200.0ppm, ----(---))	0.0 ppm	25.0 ppm	FAIL
2019/08/09 15	H2S(200.0ppm, ----(---))	0.0 ppm	25.0 ppm	FAIL

DateTime: Date and time of event occurrence  
 Gas: Gas  
 Test Result: Test result concentration  
 Concentration: Calibration gas concentration  
 Judge: Test assessment

### 3-4. Data View screen

This screen displays data details in table and graph format.

The screenshot shows the 'Data View (Interval Trend)' window. At the top, there are radio buttons for 'Table' (selected), 'Graph', 'Event Only', and 'Condensed'. To the right are buttons for 'Print', 'Export', 'Summary', and 'Return'. A data table is displayed with columns for 'No', 'Date/Time', 'CO(2000ppm)', 'O2(40.0%)', and 'Temperature'. A vertical toolbar on the right contains icons for 'Download', 'Instrument Information', 'Data', 'Last Calibration', 'Set', and 'Exit'. Four callout boxes point to the 'Table' radio button, the 'Print' button, the 'Export' button, and the 'Summary' button.

No	Date/Time	CO(2000ppm)	O2(40.0%)	Temperature
1	7/23/2019 10:15:50 AM	0 ppm	21.0 %	26.4 °C
2	7/23/2019 10:20:50 AM	0 ppm	20.9 %	26.3 °C
3	7/23/2019 10:25:50 AM	0 ppm	20.9 %	26.1 °C
4	7/23/2019 10:30:50 AM	0 ppm	20.8 %	26.1 °C
5	7/23/2019 10:33:03 AM	AIR	AIR	----
6	7/23/2019 10:33:11 AM	----	ALARM	----
7	7/23/2019 10:33:11 AM	----	WARNING	----
8	7/23/2019 10:33:48 AM	----	-ALARM	----
9	7/23/2019 10:33:48 AM	----	-WARNING	----
10	7/23/2019 10:33:48 AM	----	NORMAL	----
11	7/23/2019 10:35:50 AM	0 ppm	20.7 %	26.1 °C
12	7/23/2019 10:40:50 AM	0 ppm	20.9 %	26.1 °C
13	7/23/2019 10:45:50 AM	0 ppm	20.9 %	26.1 °C
14	7/23/2019 10:50:50 AM	0 ppm	20.9 %	26.1 °C
15	7/23/2019 10:55:50 AM	0 ppm	20.9 %	26.1 °C
16	7/23/2019 11:00:50 AM	0 ppm	20.9 %	26.1 °C
17	7/23/2019 11:05:50 AM	0 ppm	20.9 %	26.0 °C
18	7/23/2019 11:10:50 AM	0 ppm	20.9 %	25.9 °C
19	7/23/2019 11:15:50 AM	0 ppm	20.8 %	25.9 °C
20	7/23/2019 11:20:50 AM	0 ppm	20.9 %	26.1 °C
21	7/23/2019 11:25:50 AM	0 ppm	20.9 %	26.2 °C
22	7/23/2019 11:30:50 AM	0 ppm	20.9 %	26.3 °C
23	7/23/2019 11:35:50 AM	0 ppm	20.9 %	26.4 °C
24	7/23/2019 11:40:50 AM	0 ppm	20.9 %	26.6 °C
25	7/23/2019 11:45:50 AM	0 ppm	20.9 %	26.7 °C
26	7/23/2019 11:50:50 AM	0 ppm	20.9 %	26.9 °C
27	7/23/2019 11:55:50 AM	0 ppm	20.9 %	27.1 °C
28	7/23/2019 12:00:50 PM	0 ppm	20.9 %	27.2 °C

Click to select the checkbox to the left of “Event Only” or “Condensed” to change the display as follows.

- Event Only: Displays event data only.
- Condensed: Displays only fluctuating sample data.

**CAUTION:** No graph will be drawn unless there are at least five samples.  
 The “Alarm Trend” data table highlights the locations of the alarms occurred in red.

The mouse cursor will appear as follows when hovered over “WARNING”, “ALARM”, or “OVER” event data. Click on the cell here to search for corresponding trend data and to display the data (if any) in a separate window.



For WARNING, ALARM, and OVER

Separate window for WARNING, ALARM, and OVER  
 Click the “Return” button to exit the window.

\*The “Alarm Trend” data table highlights the locations of the alarms that have occurred in red.

The screenshot shows a separate window titled 'Data View (Alarm Trend)'. It displays a data table similar to the one in the main screenshot, but with a red highlight on row 181. The table columns are 'No', 'Date/Time', 'CO(2000ppm)', 'O2(40.0%)', and 'Temperature'. The highlighted row shows an 'ALARM' event.

① Selecting table or graph

- Select graph

1. Select "Graph" from the "Table" and "Graph" radio buttons at the top left of the screen.



Various operations are available using the checkboxes and combo boxes at the bottom of the screen.



Upper checkboxes (gas names): Displays or hides the corresponding gas data.

“Zoom” combo box: Specify a horizontal axis scale factor appropriate for the number of samples.

“Event” checkbox: Displays event information markers for alarms and other events.

“Cursor” checkbox: Displays the cursor on the graph.

**CAUTION:**

The maximum value on the vertical axis of the graph is adjusted automatically based on the following formula:

If the maximum value for data with no events is “x” and the full scale is 10 or greater:

$$Y_{max} = \{\text{int}(x / 10) + 1\} \times 10, \text{ and for full scale under } 10: Y_{max} = \{\text{int}(x) + 1\}$$

“int”: Decimal values are discarded.

**CAUTION:**

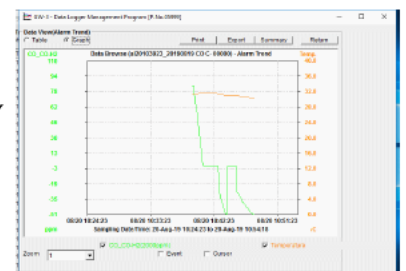
No graph will be drawn unless there are five or more normal concentration data samples. Data consisting only of events cannot be displayed in graph form because they do not contain concentration information.

The mouse cursor will appear as follows when hovered over “WARNING”, “ALARM”, or “OVER” event data. Click here to search for the corresponding trend data and to display data (if any) in a separate window.



For WARNING, ALARM, and OVER

Separate window for WARNING, ALARM, and OVER  
Click the “Return” button to exit the window.

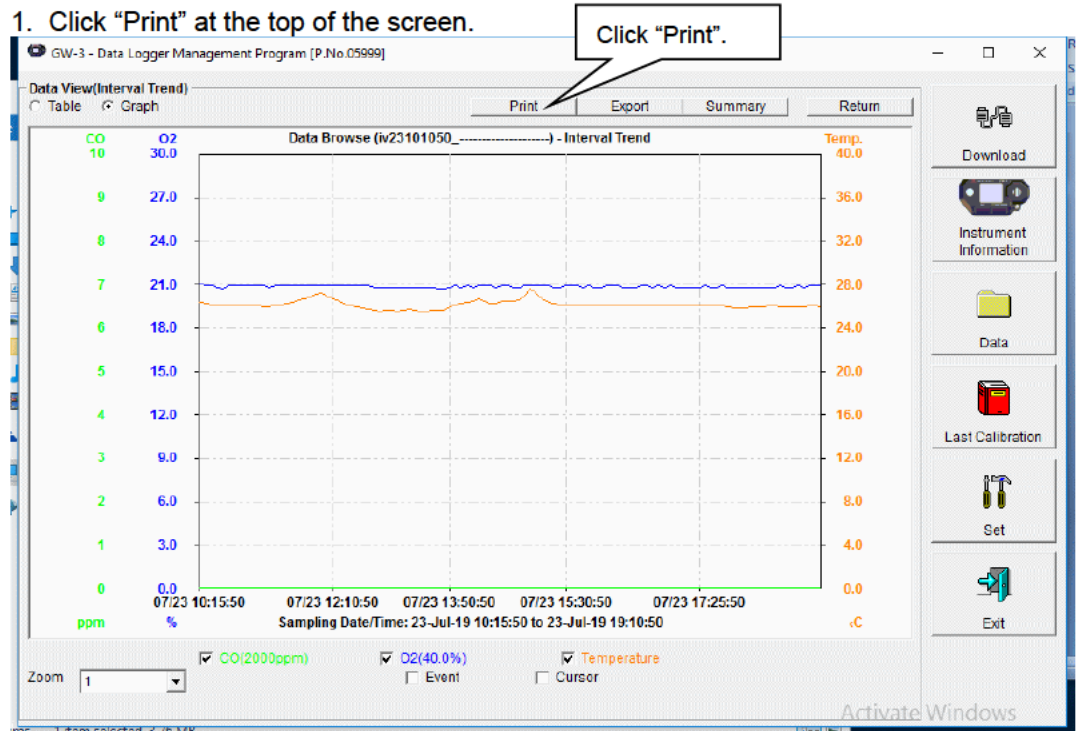


② Sending to printer

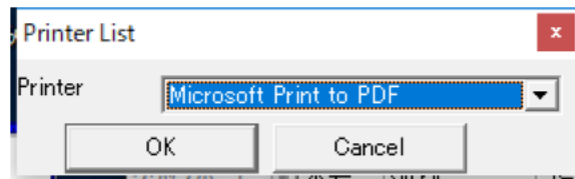
- Print

Details currently displayed on the Data View screen can be sent to the printer.

1. Click "Print" at the top of the screen.



The printer selection window appears. Select the desired printer and click the "OK" button.

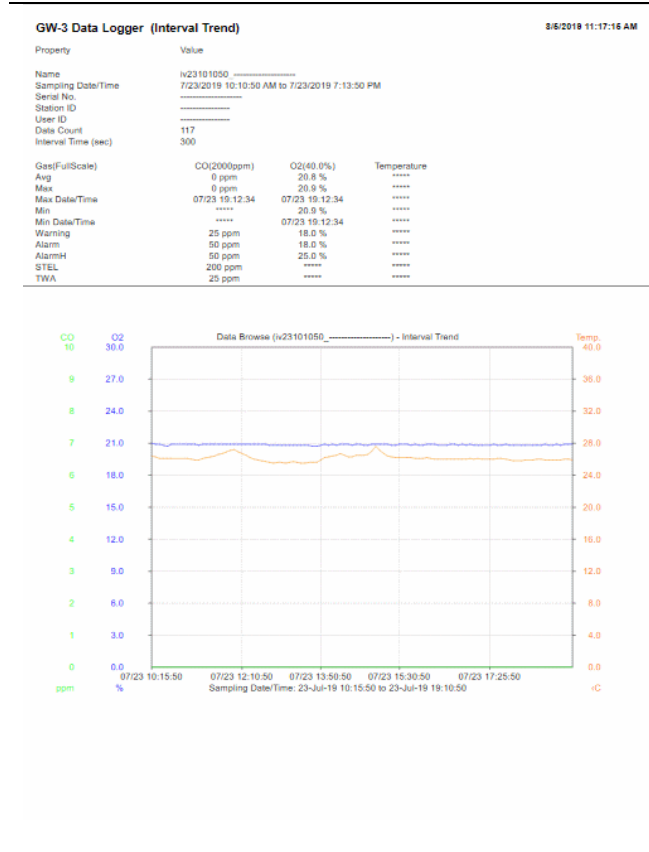


Click the "OK" button to begin printing.

Click the "Cancel" button to return to the Data View screen without printing.

Sample printout (graph print)

Sample printout (table print)



**GW-3 Data Logger (Interval Trend)** 8/6/2019 11:17:24 AM

Property Value

Name iv23101050

Sampling Date/Time 7/23/2019 10:10:50 AM to 7/23/2019 7:13:50 PM

Serial No. -----

Station ID -----

User ID -----

Data Count 117

Interval Time (sec) 300

Gas(FullScale)	CO(2000ppm)	O2(40.0%)	Temperature
Avg	0 ppm	20.8 %	-----
Max	0 ppm	20.9 %	-----
Max Date/Time	07/23 19:12:34	07/23 19:12:34	-----
Min	-----	20.9 %	-----
Min Date/Time	-----	07/23 19:12:34	-----
Warning	25 ppm	18.0 %	-----
Alarm	50 ppm	18.0 %	-----
AlarmH	50 ppm	25.0 %	-----
STEL	200 ppm	-----	-----
TWA	25 ppm	-----	-----

No	Date/Time	CO(2000ppm)	O2(40.0%)	Temperature
1	7/23/2019 10:15:50 AM	0 ppm	21.0 %	26.4 °C
2	7/23/2019 10:20:50 AM	0 ppm	20.9 %	26.3 °C
3	7/23/2019 10:25:50 AM	0 ppm	20.9 %	26.1 °C
4	7/23/2019 10:30:50 AM	0 ppm	20.8 %	26.1 °C
5	7/23/2019 10:33:03 AM	AIR	AIR	-----
6	7/23/2019 10:33:11 AM	-----	ALARM	-----
7	7/23/2019 10:33:11 AM	-----	WARNING	-----
8	7/23/2019 10:33:48 AM	-----	-ALARM	-----
9	7/23/2019 10:33:48 AM	-----	-WARNING	-----
10	7/23/2019 10:33:48 AM	-----	NORMAL	-----
11	7/23/2019 10:35:50 AM	0 ppm	20.7 %	26.1 °C
12	7/23/2019 10:40:50 AM	0 ppm	20.9 %	26.1 °C
13	7/23/2019 10:45:50 AM	0 ppm	20.9 %	26.1 °C
14	7/23/2019 10:50:50 AM	0 ppm	20.9 %	26.1 °C
15	7/23/2019 10:55:50 AM	0 ppm	20.9 %	26.1 °C
16	7/23/2019 11:00:50 AM	0 ppm	20.9 %	26.1 °C
17	7/23/2019 11:05:50 AM	0 ppm	20.9 %	26.0 °C
18	7/23/2019 11:10:50 AM	0 ppm	20.9 %	25.9 °C
19	7/23/2019 11:15:50 AM	0 ppm	20.8 %	25.9 °C
20	7/23/2019 11:20:50 AM	0 ppm	20.9 %	26.1 °C
21	7/23/2019 11:25:50 PM	0 ppm	20.9 %	26.2 °C
22	7/23/2019 11:30:50 AM	0 ppm	20.9 %	26.3 °C
23	7/23/2019 11:35:50 AM	0 ppm	20.9 %	26.4 °C
24	7/23/2019 11:40:50 AM	0 ppm	20.9 %	26.6 °C
25	7/23/2019 11:45:50 AM	0 ppm	20.9 %	26.7 °C
26	7/23/2019 11:50:50 AM	0 ppm	20.9 %	26.9 °C
27	7/23/2019 11:55:50 AM	0 ppm	20.9 %	27.1 °C
28	7/23/2019 12:00:50 PM	0 ppm	20.9 %	27.2 °C
29	7/23/2019 12:05:50 PM	0 ppm	20.9 %	26.9 °C
30	7/23/2019 12:10:50 PM	0 ppm	20.9 %	26.7 °C
31	7/23/2019 12:15:50 PM	0 ppm	20.9 %	26.5 °C
32	7/23/2019 12:20:50 PM	0 ppm	20.9 %	26.2 °C
33	7/23/2019 12:25:50 PM	0 ppm	20.9 %	26.0 °C
34	7/23/2019 12:30:50 PM	0 ppm	20.9 %	25.9 °C
35	7/23/2019 12:35:50 PM	0 ppm	20.9 %	25.8 °C
36	7/23/2019 12:40:50 PM	0 ppm	20.9 %	25.7 °C
37	7/23/2019 12:45:50 PM	0 ppm	20.8 %	25.6 °C
38	7/23/2019 12:50:50 PM	0 ppm	20.8 %	25.5 °C
39	7/23/2019 12:55:50 PM	0 ppm	20.8 %	25.6 °C
40	7/23/2019 1:00:50 PM	0 ppm	20.8 %	25.6 °C
41	7/23/2019 1:05:50 PM	0 ppm	20.8 %	25.5 °C

Sample printout (calibration history)

Sample printout (alarm events)

**GW-3 Data Logger (Calibration History)** 8/6/2019 11:19:21 AM

Property Value

Serial No. -----

Station ID -----

User ID -----

Last Download 7/30/2019 9:17:31 AM

No	Date/Time	Ch1	Ch2
1	7/23/2019 7:18:57 PM Gas	CO(2000ppm)	O2(40.0%)
	Before	-----	20.9 %
	After	-----	-----
2	7/23/2019 7:18:25 PM Gas	CO(2000ppm)	O2(40.0%)
	Before	0 ppm	20.7 %
	After	-----	-----
3	7/23/2019 7:16:37 PM Gas	CO(2000ppm)	O2(40.0%)
	Before	0 ppm	20.9 %
	After	-----	-----
4	7/23/2019 7:15:00 PM Gas	CO(2000ppm)	O2(40.0%)
	Before	0 ppm	20.9 %
	Balance	-----	-----
	After	-----	-----

**GW-3 Data Logger (Alarm Event)** 8/6/2019 11:19:43 AM

Property Value

Serial No. -----

Station ID -----

User ID -----

Last Download 7/30/2019 9:17:31 AM

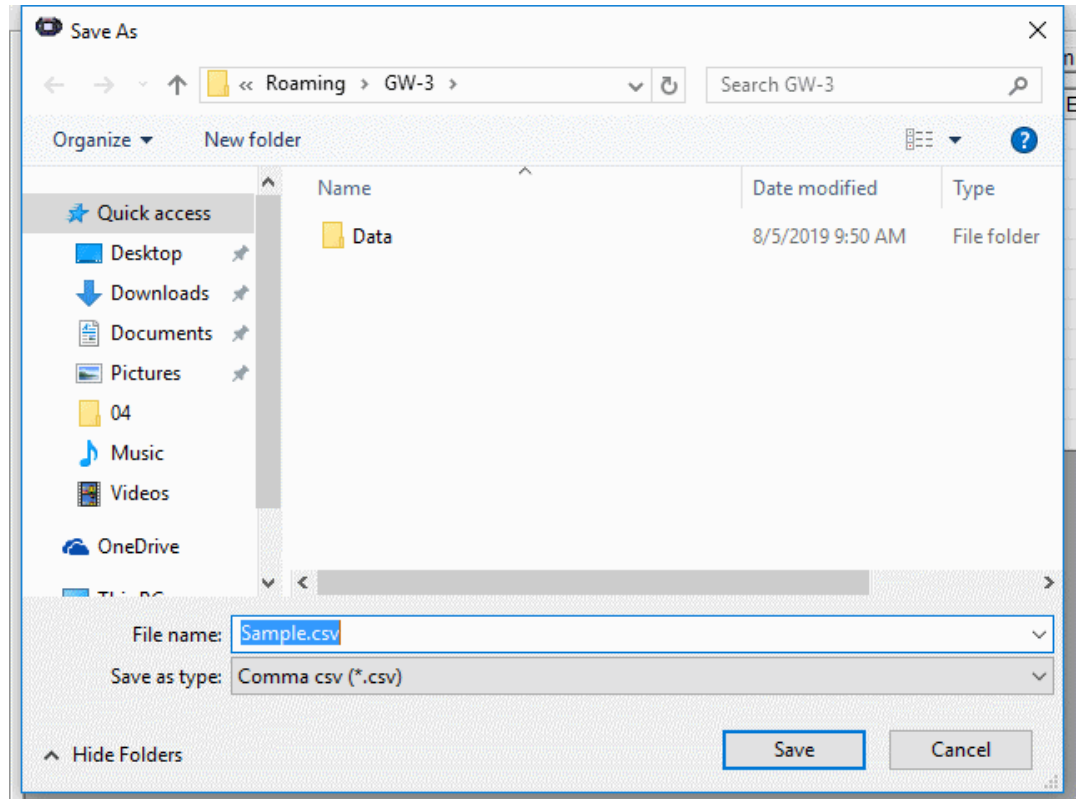
No	Date/Time	Gas	Event
1	7/27/2019 12:13:02 AM	AMCO(2000ppm)	WARNING
2	7/28/2019 8:53:38 PM	O2(40.0%)	WARNING
3	7/28/2019 8:53:38 PM	O2(40.0%)	ALARM
4	7/28/2019 2:57:44 PM	O2(40.0%)	WARNING
5	7/28/2019 2:57:44 PM	O2(40.0%)	ALARM
6	7/28/2019 2:25:46 PM	O2(40.0%)	WARNING
7	7/28/2019 2:25:46 PM	O2(40.0%)	ALARM
8	7/23/2019 7:17:20 PM	O2(40.0%)	WARNING
9	7/23/2019 7:17:20 PM	O2(40.0%)	ALARM
10	7/23/2019 10:33:11 AM	AMCO(40.0%)	WARNING
11	7/23/2019 10:33:11 AM	AMCO(40.0%)	ALARM



③ Saving to file

- Save

1. Click the “Save” button on the screen.



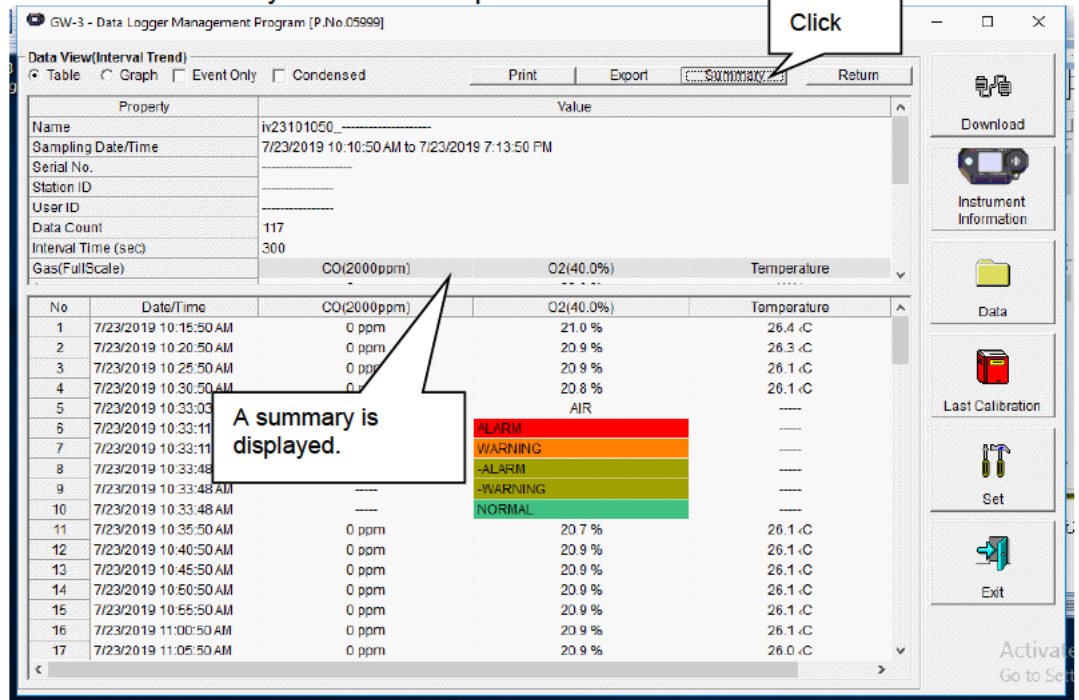
Specify the destination and file name, then click the “Save” button to save the data. Click the “Cancel” button to cancel saving.

**CAUTION:** If a table is displayed, the table contents will be saved in CSV format. If a graph is displayed, the graph will be saved in bitmap format.

④ Viewing data summary at the same time

● Summary display

1. Click the "Summary" button at the top of the screen.



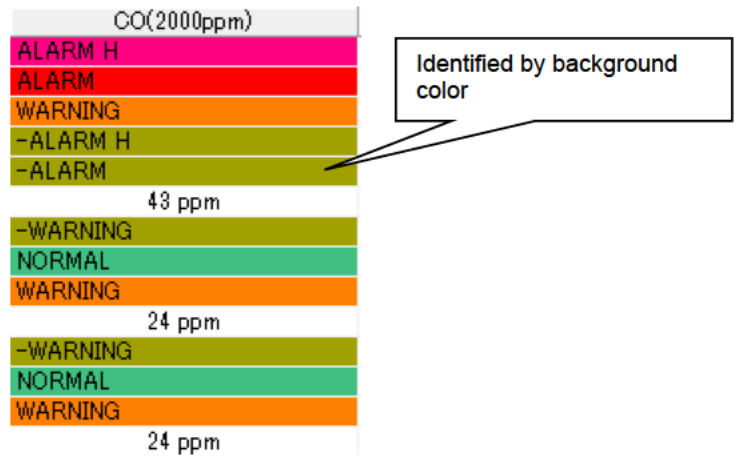
Click the "Summary" button while the summary is displayed to hide the summary display.



⑤ Table details

● Event colors

The concentration display cells for each gas in the table have different colored backgrounds based on the type of event that occurred.

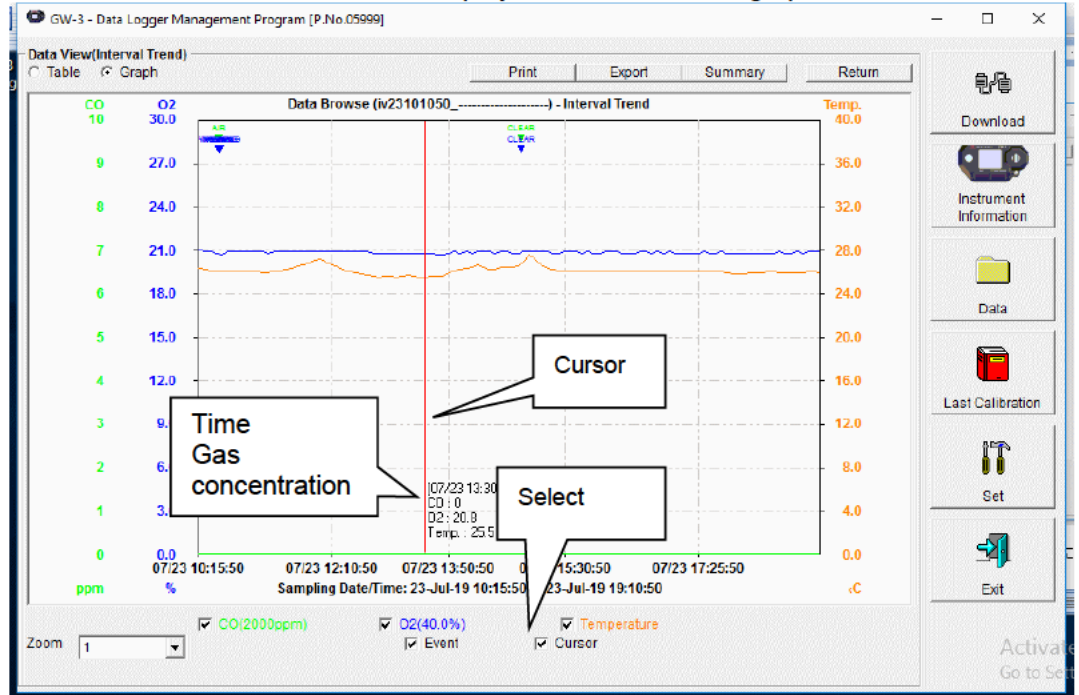


Fail:	Gray	Trouble
Warning:	Orange	1st alarm
Alarm:	Red:	2nd alarm
AlarmH:	Magenta	3rd alarm
STEL:	Pink	STEL alarm
TWA:	Bright purple	TWA alarm
-*****:	Olive	Alarms restored
Normal:	Dark green	All alarms restored
Over:	Bright red	Full-scale over

⑥ Graph details

● Cursor

1. Select the "Cursor" checkbox to display the cursor over the graph.



Use the "←" and "→" keys to move the cursor left and right. Use the "↑" and "↓" keys to move the time and concentration display up and down.

Press the "Shift" key at the same time to move the cursor faster.

CAUTION:

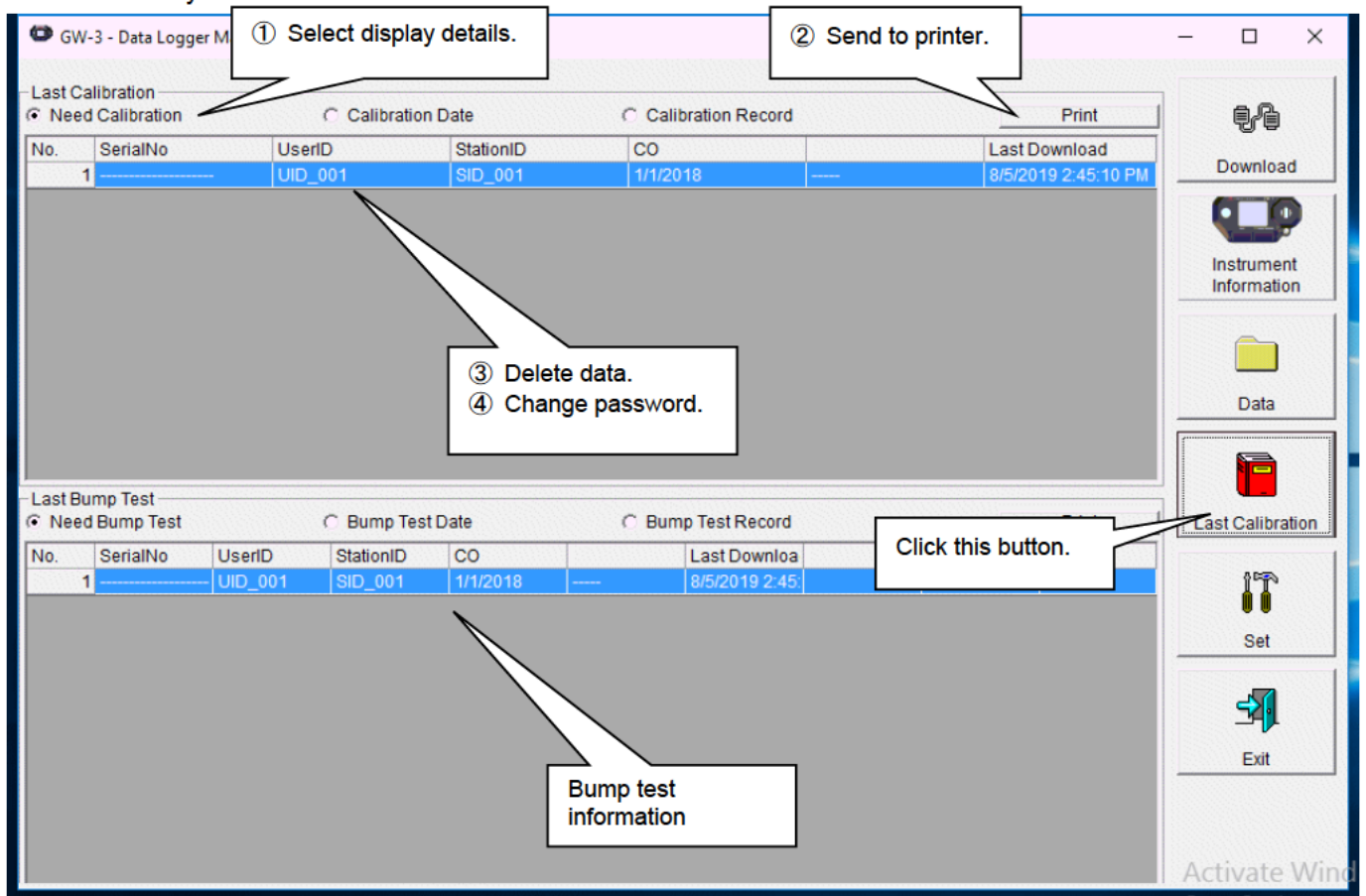
The cursor cannot be moved if a window for another program is opened and the focus is not currently on the graph area.

In this case, the cursor appears as a broken line. To return the focus, click anywhere within the graph area.



### 3-5. Last Calibration screen

This checks for the calibration expiration of previously downloaded main unit data. Bump tests are also displayed in the same way.



CAUTION: The table details are read-only and cannot be edited.

① Selecting display details

● Expired data

1. Click the "Need Calibration" radio button.

Last Calibration

Need Calibration
  Calibration Date
  Calibration Record

No.	SerialNo	UserID	StationID	CO	Last Downl
1	-----	U_ID_001	S_ID_001	1/1/2018	8/2/2019 1:

Displays calibrations for previously connected GW-3 main units (for which device information data has been downloaded) that have expired.

● List display

1. Click the "Calibration Date" radio button.

Last Calibration

Need Calibration
  Calibration Date
  Calibration Record

No.	SerialNo	UserID	StationID	CO	Last Downl
1	-----	U_ID_001	S_ID_001	1/1/2018	8/2/2019 1:

Lists data for previously connected GW-3 main units. (Only the most recent data is listed for units with the same serial number, user ID and station ID.)

● Detailed display

1. Click the "Calibration Record" radio button.

Last Calibration

Need Calibration
  Calibration Date
  Calibration Record

No.	SerialNo	UserID	StationID	Gas	Before	After	A.Cal.	Cal.Due(Da
1	-----	U_ID_001	S_ID_001	CO	0	0	50	Now
					----	----	----	----

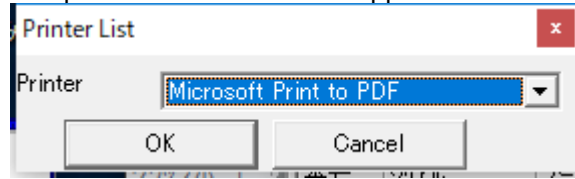
Displays data for previously connected GW-3 main units in the same format as the Instrument Information screen.

For more information on display contents: → Refer to "③ Calibration history information" in "3-2. Instrument Information screen".

② Sending to printer

- Print

The most recent calibration dates shown in the “Need Calibration” and “Calibration Date” displays can be printed out. The printer selection window appears. Select the desired printer and click the “OK” button.



GW-3 Data Logger (Last Calibration)

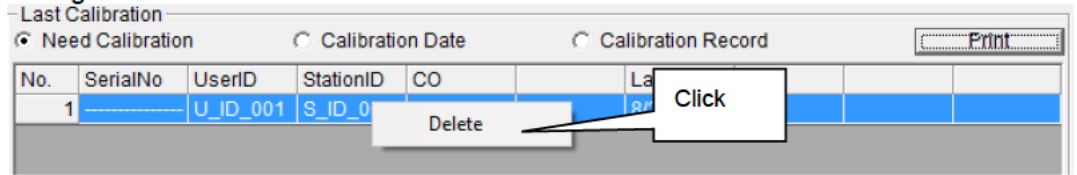
8/5/2019 11:43:36 AM

No.	SerialNo	UserID	StationID	CO	Last Download	
1	.....	U_ID_001	S_ID_001	1/1/2018	.....	8/2/2019 1:21:08 PM

③ Deleting data

● Delete

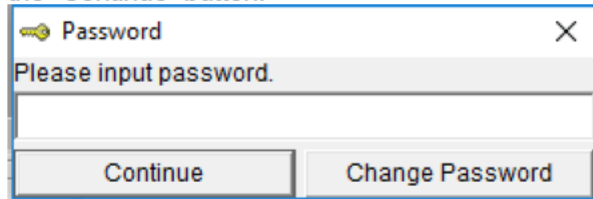
1. Right-click over the data to delete.



CAUTION: Only data shown in the “Need Calibration” and “Calibration Date” displays can be deleted.  
 Data cannot be deleted in the “Calibration Record” display.

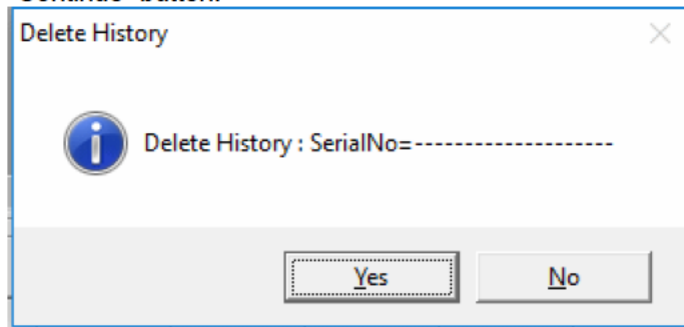
● Password input

1. Click the “Delete” button to display a password dialog. Enter the password, then click the “Continue” button.



CAUTION: Clicking “Continue” without entering a password will cancel the delete.

2. The following message will appear when you enter the correct password and click the “Continue” button.



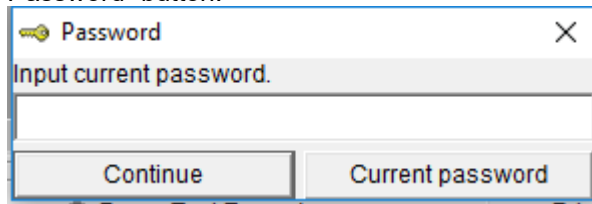
Click the “Yes” button to delete the data.  
 Click the “No” button to cancel data deletion.

CAUTION: The default password immediately after installation is “Riken” (not case-sensitive). See "3-5. ④ Changing the password" for information on how to change the password.

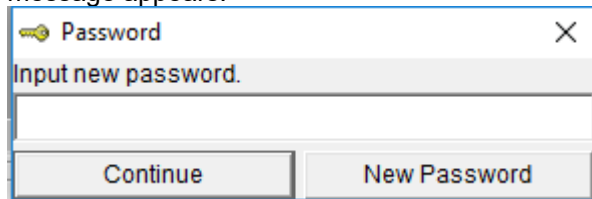
#### ④ Changing the password

- Password input

1. Open the password dialog in the same way as for data deletion, then click the “Change Password” button.

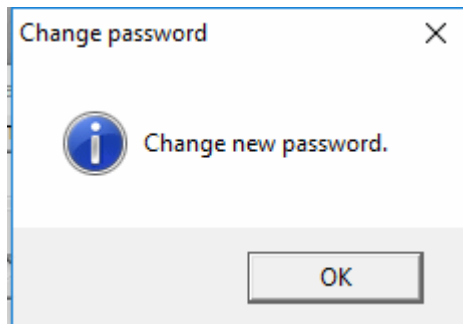


2. Enter the correct password, then click the “Current password” button. The following message appears.



3. Enter the new password here, then click the “New Password” button.

4. A password dialog will appear again. Enter the same (new) password, then click the “New Password” button.

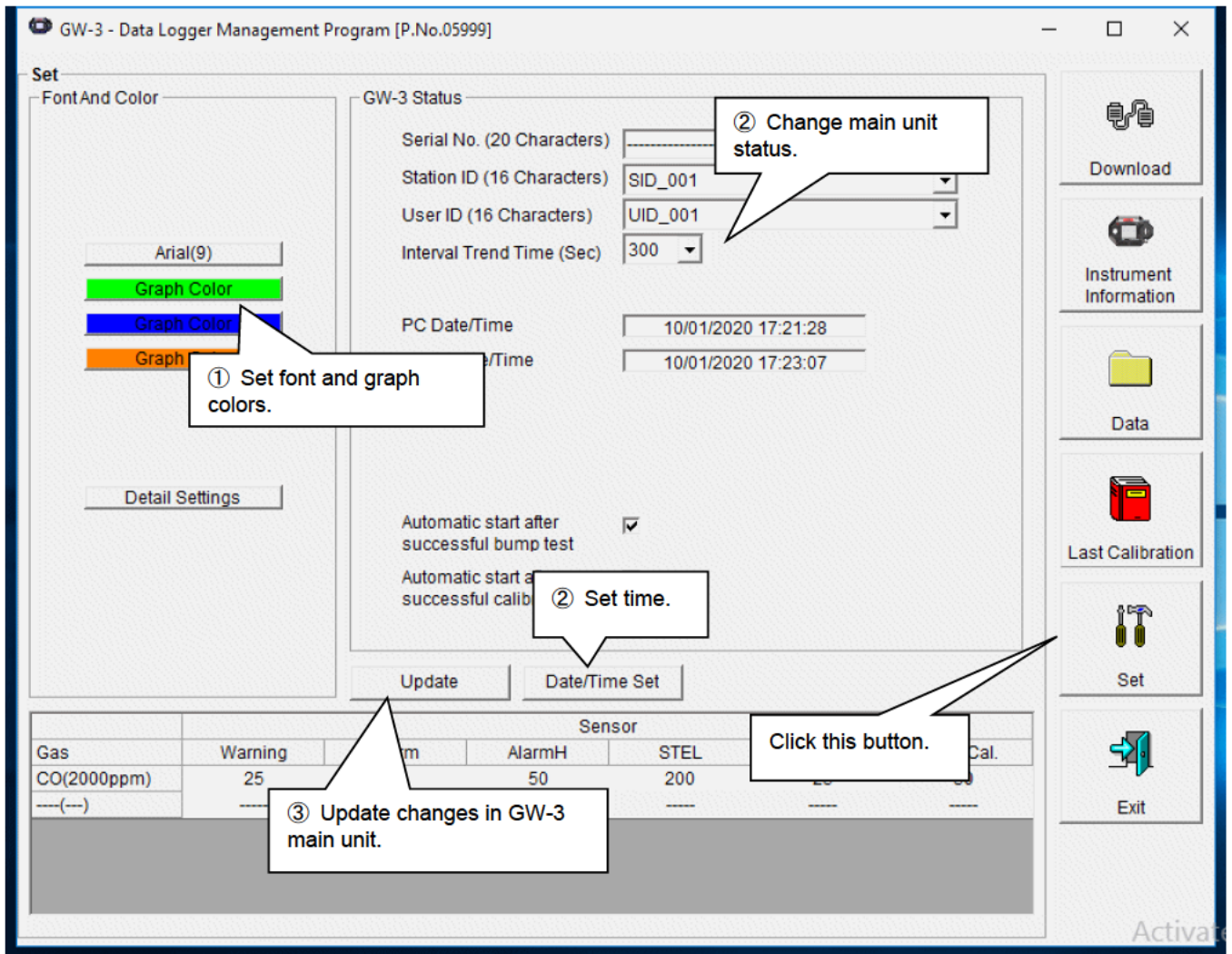


Lastly, click “OK” to update to the new password.

**CAUTION:** The default password immediately after installation is “Riken”. (not case-sensitive).

### 3-6. Set screen

This screen is used to configure screen display settings and main unit status settings.



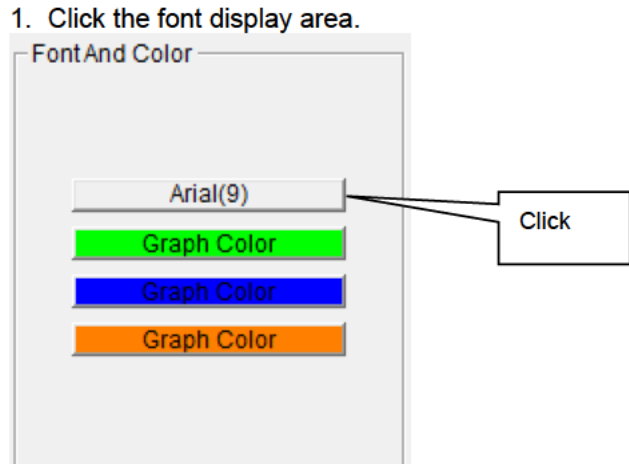
CAUTION: Data that has been set or changed must be sent to the GW-3 main unit by clicking the "Update" button.

CAUTION: Font settings will be applied from the next time the program is started.



① Setting font and graph colors

● Change font



Set the desired font in the font setting dialog that appears.

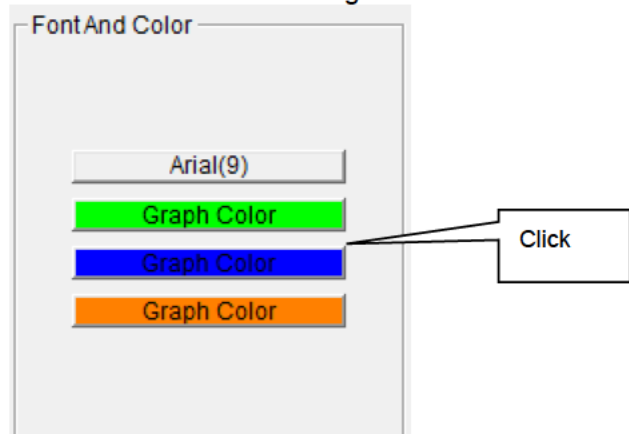
CAUTION:

The screen display may become hard to read if you use an excessively large font. Changes made here will be applied from the next time the program is started.

● Change graph color

The display colors for respective gases can be changed on the graph.

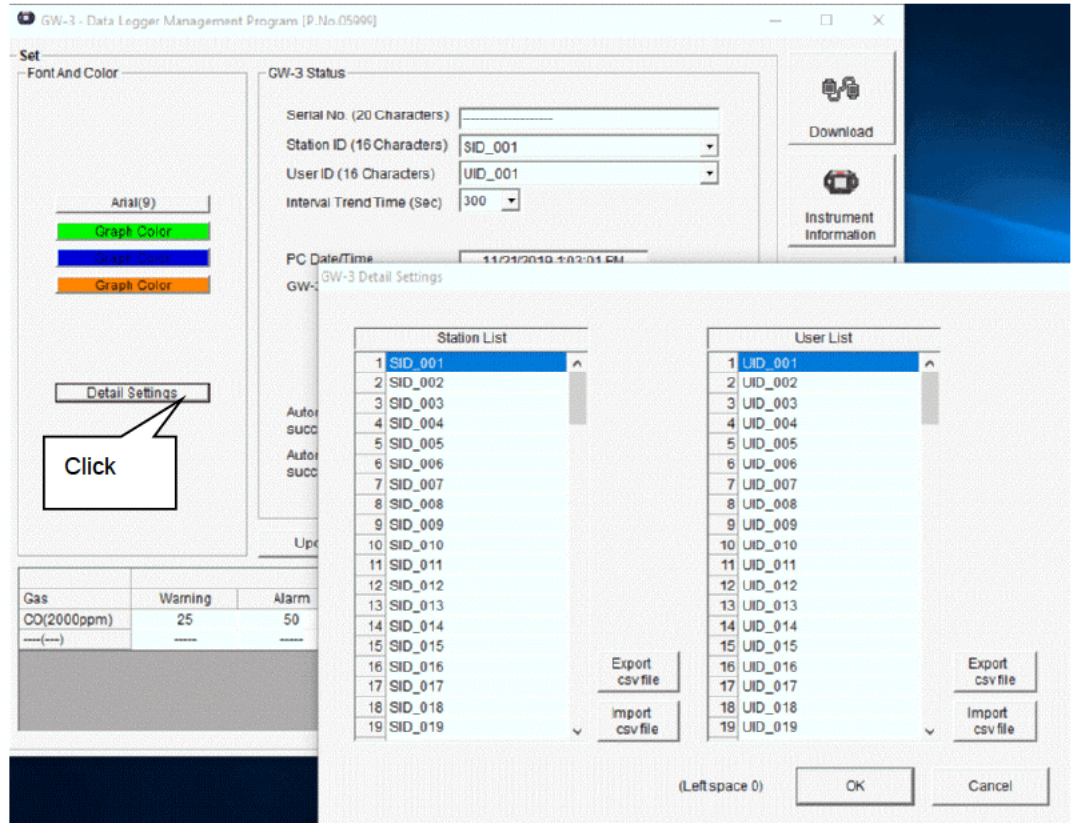
1. Click the color area for a gas.



Select the desired color in the color selection dialog that appears.

● Edit station ID and user ID lists

1. The station ID and user ID lists can be edited. Click "Detail Settings".

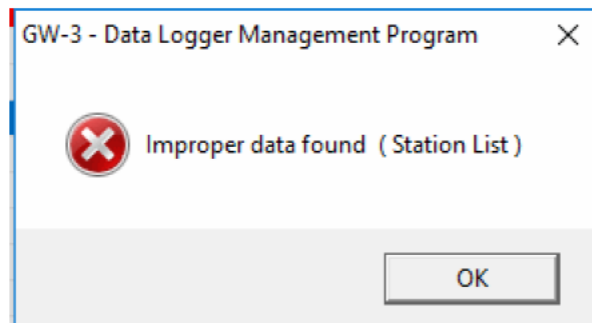


An edit dialog appears. The station list can contain up to 128 entries. You can use up to 16 alphanumerical characters, including the space, hyphen, and slash symbols.

**Export csv file:** Outputs to file. Creates a text file containing the number and data entries.

**Import csv file:** Imports from a text file containing number and data entries. The background color will appear in red for entries with unsupported characters or too many characters.

\* **OK** cannot be clicked if there are entries with a red background.



② Changing main unit status

- Edit

1. Edit data in the status area as required.

You can modify the 20 characters of the “Serial No.”. Select from the pull-down list to change “Interval Trend Time”, “Station ID”, and “User ID”. “Auto Start After Bump Test” and “Auto Start After Cal.” can be enabled or disabled.

Click the “Date/Time Set” button to synchronize the PC time (“PC Date/Time”) with the GW-3 main unit internal clock (“GW-3 Date/Time”).

CAUTION: Dates and times cannot be entered directly into the date/time boxes.

CAUTION: Apart from clock setting, changing the status data here alone will not update the same data in the GW-3 main unit. Be sure to click “Update” to update the changes in the main unit.

③ Updating changes in GW-3 main unit

- Notify of changes

1. Click the “Update” button after making changes.

Click the “Yes” button to send the changes to the GW-3 main unit to be stored. Click the “No” button to cancel update notification.

CAUTION: You cannot restore changed details. If “Update” has not yet been clicked, you can restore the changed details to the information on the main unit by clicking the “Instrument Information” button on the “Download” screen to download the device information data.

## 4. Data Maintenance

Depending on how the data is used, reading the data several times a day may result in large data volumes, which in turn may mean data takes longer to find. Unforeseen problems with the PC, etc., may also lead to loss of valuable data.

We recommend backing up data periodically to protect against such circumstances.

### 4-1. Data storage configuration details

Data is contained within the installed GW-3 program folder.

- 1) File name: GW3.mdb  
File type: Microsoft JET 3.6 database file
  
- 2) File name: Data  
File type: Folder. Individual trend data files are stored in folders organized by year and/or month.

### 4-2. Backing up

Depending on the system configuration, we recommend copying data to a separate hard disk drive or external auxiliary storage device (for example, MO or CD-R).

When restoring data, by copying the backup data to the location at which the GW-3 executable file is saved, the data can be searched and viewed when the program is started.

## 5. Usage Precautions

Note the following precautions when using this program:

- ① Confirm that the GW-3 is in a suitable location for receiving data. Normal communication is not possible if it is not in a suitable location.
- ② Avoid using similar functions on other applications at the same time data is being received. (For example, using infrared communication with other applications while data is being received)
- ③ Do not forcibly shut down this program. (For example, using the Ctrl + Alt + Del operation) The program performs shutdown processing in which it saves configuration parameters for use the next time the program starts. Forcibly shutting down the program may cause problems the next time the program starts.
- ④ Do not directly modify or overwrite data files.

## 6. Troubleshooting

Symptoms	Cause	Corrective action
Communication is not possible.	The main unit is not in a suitable location. Obstacles are in the way.	Reposition the main unit.
	Other devices using infrared are present.	Turn off the other devices or take other measures to prevent interference.
An error occurs during communication.	Disturbance light is present.	Remove any other devices that use infrared.
	The GW-3 main unit moves during communication.	Make sure the GX-3R main unit does not move during communication.
The communication data is erroneous.	Disturbance light is present.	Remove any other devices that use or emit infrared.

If the problems persist even after taking the action described here, please contact Riken Keiki.

## 7. IrDA Specifications

### 7-1. Infrared communication

Infrared communication (IrDA protocol) is used for communicating with the main unit.

Check whether the PC being used supports infrared communication.

Ensure a direct line of sight between the PC communication port and the infrared communication port on the main unit. Remove any other sources of light interference.

#### CAUTION:

This program is able to communicate with the GW-3 main unit only in environments that support IrDA. Confirm that the PC being used has a built-in IrDA device that is currently usable.

A commercially available IrDA USB adapter is required if you are using a PC that lacks a built-in IrDA device (for example, most desktop PCs and some laptop PCs).

## 8. File Organization

Details of the files present when the program is installed and the files present during operation are provided below.

### 8-1. Current directory immediately after installation

File name	Details
GW3.exe RklrDA11.ocx Filemove.avi	GW-3 program body Infrared communication component Animation file used during data reception

### 8-2. Current directory during operation

File name	Details
GW3.exe RklrDA11.ocx Filemove.avi	GW-3 program body Infrared communication component Animation file used during data reception
GW3.ini GW3.dat GW3.mdb Data Serial.log	GW-3 initial setup file Data downloading file Database file (Microsoft Jet 3.6 database) Directory for saving trend data files Record of communication port details since the program was started (for investigation/maintenance use)

CAUTION: The files and directories listed below the double line are created after the program is started.



## 9. Software Function Specifications

Product name (Program name)	GW-3 Data Logger Management Program
Product model	SW-GW-3
Executable file name	GW3.EXE
Compatible operating systems	Microsoft Corporation Windows 7 Windows 8 Windows 10
Program size	Main program approx. 3 MB; libraries approx. 5.2 MB (Uses up to 40 MB of hard disk space during installation.)
Communication with main unit	Infrared (IrDA 1.1 protocol) compliant method Standard communication settings Baud rate 57,600 bps (upper limit) Data bits 8 bits Stop bit 1 bit Parity Even
Transmission time	Max. approx. 3 minutes (for maximum number of data samples and standard communication settings)
Medium	CD-ROM ×1
Package contents	Operating manual (this document) Product warranty registration card User license agreement

Revision History

Edition	Revision	Date issued
0	First edition	5/15/2020